



# WORKWEAR

HIGH VISIBILITY & FLAME RESISTANT CLOTHING **2015**

**SPORTEX™**  
SAFETY





# TABLE OF CONTENTS

## HIGH VISIBILITY

- 4 // VESTS
- 12 // T-SHIRTS
- 15 // POLOS
- 15 // WORKSHIRTS
- 16 // LIGHT OUTERWEAR
- 18 // JACKETS
- 19 // RAIN GEAR
- 22 // PANTS
- 22 // HEADWEAR
- 24 // ACCESSORIES

## FLAME RESISTANT

- 27 // VESTS
- 32 // T-SHIRTS
- 33 // WORKSHIRTS
- 34 // FLEECE OUTERWEAR
- 36 // WELDING JACKETS
- 40 // JACKETS
- 41 // COVERALLS / BIBS
- 42 // RAIN GEAR
- 43 // HEADWEAR
- 43 // ACCESSORIES

# HIGH VISIBILITY



## WORKWEAR

### HIGH-VISIBILITY DETAILS

High-Visibility safety apparel makes the wearer more visible to traffic under any conditions. High-Visibility safety apparel is personal protective safety clothing that is intended to provide conspicuity [make the wearer more visible] during both daytime and nighttime usage, and that meets the Performance Class 2 or 3 requirements of American National Standards Institute (ANSI) International Safety Equipment Association (ISEA) 107-2004. All workers within the right-of-way of a Federal-aid highway who are exposed either to traffic, or to construction equipment within the work area shall wear high-visibility safety apparel.

High-Visibility safety apparel should be replaced when it becomes faded, torn, dirty, soiled, worn, or defaced, or if it is not visible at 1,000 feet day or night. The typical useful service life of high-visibility safety apparel depends on the type of work an individual performs while wearing the apparel. Apparel that is worn on a daily basis has a service life expectancy of approximately 6 months, although apparel that is not worn on a daily basis may have a useful service life of up to 3 years.

### WASHING INSTRUCTIONS

WASHING	DRYING
1. Safety Vests Should be washed in normal detergent & line dried or tumble dried on low heat. 2. Fabric softeners SHOULD NOT BE USED. 3. DO NOT USE chlorine bleaches.	1. DO NOT dry clean 2. Drying in excess of 100°F will cause discoloration and shrinking of fabric.

### SIZING CHART

VEST	S	M	L	XL	2XL	3XL	4X	5X	6X	ST	MT	LT	XLT	2XLT	3XLT	4XLT	5XLT	6XLT	
CHEST	46	48	50	52	56	60	64	68	72	46	48	50	52	56	60	64	68	72	
LENGTH	27	27	28	28	29	30	31	32	32	30	30	31	31	32	33	34	35	35	
WELDING JACKET																			
CHEST	42	46	50	54	58	62	66	70		42	46	50	54	58	62	66	70		
LENGTH	29	31	31	31	35	37	39	39		21	24	24	24	28	40	42	42		
SLEEVE LENGTH	33	34	36	38	40	42	43	44		33	34	36	38	40	42	43	44		
OVERALL & BIBS // OVERALL										// BIBS									
CHEST	42	44	46	50	54	58	62	66											
SLEEVE LENGTH	33	34	35	36	37	38	39	40											
INSEAM	28	29	30	31	31	32	32	33		28	29	30	31	31	32	32			
WAIST	30	32	34	38	42	46	50			34	38	42	46	50	54	58			



# HIGH VISIBILITY

## // VESTS



### CLASS II ALL-MESH VESTS ZIPPER CLOSURE

ANSI / ISEA (107-2004) ANSI CLASS II SAFETY VEST; ALL-MESH, NFPA 701 \*

SIZE	COST EA	SPTX PART #	SIZE	COST EA	SPTX PART #	SIZE	COST EA	SPTX PART #
S	\$ 29.98	BNSF1503705	2XL	\$ 31.08	BNSF1503709	LG TALL	\$ 31.08	BNSF1503714
M	\$ 29.98	BNSF1503706	3XL	\$ 34.38	BNSF1503710	XL TALL	\$ 31.08	BNSF1503715
L	\$ 29.98	BNSF1503707	4XL	\$ 35.75	BNSF1503711	2XL TALL	\$ 34.38	BNSF1503716
XL	\$ 29.98	BNSF1503708	5XL	\$ 38.78	BNSF1503712	3XL TALL	\$ 35.75	BNSF1503717
			6XL	\$ 39.88	BNSF1503713	4XL TALL	\$ 38.78	BNSF1503718
						5XL TALL	\$ 39.88	BNSF1503719
						6XL TALL	\$ 40.43	BNSF1503720



### CLASS II ALL-MESH VESTS SNAP CLOSURE

ANSI / ISEA (107-2004) ANSI CLASS II SAFETY VEST; ALL-MESH, NFPA 701 \*

SIZE	COST EA	SPTX PART #	SIZE	COST EA	SPTX PART #	SIZE	COST EA	SPTX PART #
S	\$ 32.97	BNSF1003705	2XL	\$ 34.18	BNSF1003709	LG TALL	\$ 34.18	BNSF1003714
M	\$ 32.97	BNSF1003706	3XL	\$ 37.81	BNSF1003710	XL TALL	\$ 34.18	BNSF1003715
L	\$ 32.97	BNSF1003707	4XL	\$ 39.33	BNSF1003711	2XL TALL	\$ 37.81	BNSF1003716
XL	\$ 32.97	BNSF1003708	5XL	\$ 42.65	BNSF1003712	3XL TALL	\$ 39.33	BNSF1003717
			6XL	\$ 43.86	BNSF1003713	4XL TALL	\$ 42.65	BNSF1003718
						5XL TALL	\$ 43.86	BNSF1003719
						6XL TALL	\$ 44.47	BNSF1003720



### CLASS III ALL-MESH VESTS ZIPPER CLOSURE

ANSI / ISEA (107-2004) ANSI CLASS III SAFETY VEST; ALL-MESH, NFPA 701 \*

SIZE	COST EA	SPTX PART #	SIZE	COST EA	SPTX PART #	SIZE	COST EA	SPTX PART #
S	\$ 36.03	BNSF1533705	2XL	\$ 38.23	BNSF1533709	LG TALL	\$ 38.23	BNSF1533714
M	\$ 36.03	BNSF1533706	3XL	\$ 40.43	BNSF1533710	XL TALL	\$ 38.23	BNSF1533715
L	\$ 36.03	BNSF1533707	4XL	\$ 42.63	BNSF1533711	2XL TALL	\$ 40.43	BNSF1533716
XL	\$ 36.03	BNSF1533708	5XL	\$ 44.83	BNSF1533712	3XL TALL	\$ 42.63	BNSF1533717
			6XL	\$ 47.03	BNSF1533713	4XL TALL	\$ 44.83	BNSF1533718
						5XL TALL	\$ 47.03	BNSF1533719
						6XL TALL	\$ 49.38	BNSF1533720



### CLASS III ALL-MESH VESTS SNAP CLOSURE

ANSI / ISEA (107-2004) ANSI CLASS III SAFETY VEST; ALL-MESH, NFPA 701 \*

SIZE	COST EA	SPTX PART #	SIZE	COST EA	SPTX PART #	SIZE	COST EA	SPTX PART #
S	\$ 39.63	BNSF1033705	2XL	\$ 42.05	BNSF1033709	LG TALL	\$ 42.05	BNSF1033714
M	\$ 39.63	BNSF1033706	3XL	\$ 44.47	BNSF1033710	XL TALL	\$ 42.05	BNSF1033715
L	\$ 39.63	BNSF1033707	4XL	\$ 46.89	BNSF1033711	2XL TALL	\$ 44.47	BNSF1033716
XL	\$ 39.63	BNSF1033708	5XL	\$ 49.31	BNSF1033712	3XL TALL	\$ 46.89	BNSF1033717
			6XL	\$ 51.73	BNSF1033713	4XL TALL	\$ 49.31	BNSF1033718
						5XL TALL	\$ 51.73	BNSF1033719
						6XL TALL	\$ 54.27	BNSF1033720



## // VESTS



### CLASS II ALL-MESH VEST ZIPPER CLOSURE WITH ON TRACK POCKET

ANSI / ISEA (107-2004) ANSI CLASS II ALL-MESH SAFETY VEST; ZIPPER CLOSURE; LFC POCKET FLAP CLOSURE; NFPA 701 \*\*

SIZE	COST EA	SPTX PART #	SIZE	COST EA	SPTX PART #	SIZE	COST EA	SPTX PART #
S	\$ 35.03	BNSF1523705	2XL	\$ 37.23	BNSF1523709	LG TALL	\$ 37.23	BNSF1523714
M	\$ 35.03	BNSF1523706	3XL	\$ 34.38	BNSF1523710	XL TALL	\$ 37.23	BNSF1523715
L	\$ 35.03	BNSF1523707	4XL	\$ 35.75	BNSF1523711	2XL TALL	\$ 34.38	BNSF1523716
XL	\$ 35.03	BNSF1523708	5XL	\$ 38.78	BNSF1523712	3XL TALL	\$ 35.75	BNSF1523717
			6XL	\$39.88	BNSF1523713	4XL TALL	\$ 38.78	BNSF1523718
						5XL TALL	\$ 39.88	BNSF1523719
						6XL TALL	\$ 48.38	BNSF1523720



### CLASS III ALL-MESH VEST ZIPPER CLOSURE WITH ON TRACK POCKETS

ANSI / ISEA (107-2004) CLASS III ALL-MESH SAFETY VEST; ZIPPER CLOSURE; LFC POCKET FLAP CLOSURE; NFPA 701 \*

SIZE	COST EA	SPTX PART #	SIZE	COST EA	SPTX PART #	SIZE	COST EA	SPTX PART #
S	\$ 43.75	BNSF1543705	2XL	\$ 46.75	BNSF1543709	LG TALL	\$ 46.75	BNSF1543714
M	\$ 43.75	BNSF1543706	3XL	\$ 48.95	BNSF1543710	XL TALL	\$ 46.75	BNSF1543715
L	\$ 43.75	BNSF1543707	4XL	\$ 51.25	BNSF1543711	2XL TALL	\$ 48.95	BNSF1543716
XL	\$ 43.75	BNSF1543708	5XL	\$ 54.25	BNSF1543712	3XL TALL	\$ 51.25	BNSF1543717
			6XL	\$ 57.25	BNSF1543713	4XL TALL	\$ 54.25	BNSF1543718
						5XL TALL	\$ 57.25	BNSF1543719
						6XL TALL	\$ 60.25	BNSF1543720

**NEW  
ITEM**



### CLASS II ALL-MESH SAFETY VEST; RFC & LFC ON-TRACK POCKET WITH FLAP CLOSURE

ANSI / ISEA (107-2004) ANSI CLASS II ALL-MESH SAFETY VEST; ZIPPER CLOSURE; LFC & RFC POCKET FLAP CLOSURE; NFPA 701 \*\*

SIZE	COST EA	SPTX PART #	SIZE	COST EA	SPTX PART #	SIZE	COST EA	SPTX PART #
S	\$ 40.03	BNSF1423705	2XL	\$ 42.23	BNSF1423709	LG TALL	\$ 42.23	BNSF1423714
M	\$ 40.03	BNSF1423706	3XL	\$ 39.38	BNSF1423710	XL TALL	\$ 42.23	BNSF1423715
L	\$ 40.03	BNSF1423707	4XL	\$ 40.75	BNSF1423711	2XL TALL	\$ 39.38	BNSF1423716
XL	\$ 40.03	BNSF14237-XL	5XL	\$ 43.78	BNSF1423712	3XL TALL	\$ 40.75	BNSF1423717
			6XL	\$ 44.88	BNSF1423713	4XL TALL	\$ 43.78	BNSF1423718
						5XL TALL	\$ 44.88	BNSF1423719
						6XL TALL	\$ 49.38	BNSF1423720

**NEW  
ITEM**



### CLASS III ALL-MESH SAFETY VEST; RFC & LFC ON-TRACK POCKET WITH FLAP CLOSURE

ANSI / ISEA (107-2004) ANSI CLASS II ALL-MESH SAFETY VEST; ZIPPER CLOSURE; LFC & RFC POCKET FLAP CLOSURE; NFPA 701 \*\*

SIZE	COST EA	SPTX PART #	SIZE	COST EA	SPTX PART #	SIZE	COST EA	SPTX PART #
S	\$ 48.75	BNSF1443705	2XL	\$ 51.75	BNSF1443709	LG TALL	\$ 51.75	BNSF1443714
M	\$ 48.75	BNSF1443706	3XL	\$ 53.95	BNSF1443710	XL TALL	\$ 51.75	BNSF1443715
L	\$ 48.75	BNSF1443707	4XL	\$ 56.25	BNSF1443711	2XL TALL	\$ 53.95	BNSF1443716
XL	\$ 48.75	BNSF1443708	5XL	\$ 59.25	BNSF1443712	3XL TALL	\$ 56.25	BNSF1443717
			6XL	\$ 63.25	BNSF1443713	4XL TALL	\$ 59.25	BNSF1443718
						5XL TALL	\$ 63.25	BNSF1443719
						6XL TALL	\$ 65.25	BNSF1443720

# HIGH VISIBILITY

## // VESTS



### CLASS II ALL-FABRIC VESTS ZIPPER CLOSURE

ANSI / ISEA (107-2004) ANSI CLASS II SAFETY VEST; ALL-FABRIC, NFPA 701 \*

SIZE	COST EA	SPTX PART #	SIZE	COST EA	SPTX PART #	SIZE	COST EA	SPTX PART #
S	\$ 31.63	BNSF3503705	2XL	\$ 33.83	BNSF3503709	LG TALL	\$ 33.83	BNSF3503714
M	\$ 31.63	BNSF3503706	3XL	\$ 34.93	BNSF3503710	XL TALL	\$ 33.83	BNSF3503715
L	\$ 31.63	BNSF3503707	4XL	\$ 36.03	BNSF3503711	2XL TALL	\$ 34.93	BNSF3503716
XL	\$ 31.63	BNSF3503708	5XL	\$ 37.13	BNSF3503712	3XL TALL	\$ 35.75	BNSF3503717
			6XL	\$ 38.23	BNSF3503713	4XL TALL	\$ 37.13	BNSF3503718
						5XL TALL	\$ 38.23	BNSF3503719
						6XL TALL	\$ 39.33	BNSF3503720



### CLASS II ALL-FABRIC VESTS SNAP CLOSURE

ANSI / ISEA (107-2004) ANSI CLASS II SAFETY VEST; ALL-FABRIC, NFPA 701 \*

SIZE	COST EA	SPTX PART #	SIZE	COST EA	SPTX PART #	SIZE	COST EA	SPTX PART #
S	\$ 34.79	BNSF3003705	2XL	\$ 37.21	BNSF3003709	LG TALL	\$ 37.21	BNSF3003714
M	\$ 34.79	BNSF3003706	3XL	\$ 38.42	BNSF3003710	XL TALL	\$ 37.21	BNSF3003715
L	\$ 34.79	BNSF3003707	4XL	\$ 39.63	BNSF3003711	2XL TALL	\$ 38.42	BNSF3003716
XL	\$ 34.79	BNSF3003708	5XL	\$ 40.84	BNSF3003712	3XL TALL	\$ 39.63	BNSF3003717
			6XL	\$ 42.5	BNSF3003713	4XL TALL	\$ 40.84	BNSF3003718
						5XL TALL	\$ 42.05	BNSF3003719
						6XL TALL	\$ 43.26	BNSF3003720



### CLASS III ALL-FABRIC VESTS ZIPPER CLOSURE

ANSI / ISEA (107-2004) ANSI CLASS III SAFETY VEST; ALL-FABRIC, NFPA 701 \*

SIZE	COST EA	SPTX PART #	SIZE	COST EA	SPTX PART #	SIZE	COST EA	SPTX PART #
S	\$ 43.73	BNSF3533705	2XL	\$ 45.93	BNSF3533709	LG TALL	\$ 45.93	BNSF3533714
M	\$ 43.73	BNSF3533706	3XL	\$ 47.03	BNSF3533710	XL TALL	\$ 45.93	BNSF3533715
L	\$ 43.73	BNSF3533707	4XL	\$ 48.13	BNSF3533711	2XL TALL	\$ 47.03	BNSF3533716
XL	\$ 43.73	BNSF3533708	5XL	\$ 49.23	BNSF3533712	3XL TALL	\$ 48.13	BNSF3533717
			6XL	\$ 50.33	BNSF3533713	4XL TALL	\$ 49.23	BNSF3533718
						5XL TALL	\$ 50.33	BNSF3533719
						6XL TALL	\$ 51.43	BNSF3533720



### CLASS III ALL-FABRIC VESTS SNAP CLOSURE

ANSI / ISEA (107-2004) ANSI CLASS III SAFETY VEST; ALL-FABRIC, NFPA 701 \*

SIZE	COST EA	SPTX PART #	SIZE	COST EA	SPTX PART #	SIZE	COST EA	SPTX PART #
S	\$ 48.10	BNSF3033705	2XL	\$ 50.52	BNSF3033709	LG TALL	\$ 50.25	BNSF3033714
M	\$ 48.10	BNSF3033706	3XL	\$ 51.73	BNSF3033710	XL TALL	\$ 50.25	BNSF3033715
L	\$ 48.10	BNSF3033707	4XL	\$ 52.94	BNSF3033711	2XL TALL	\$ 51.73	BNSF3033716
XL	\$ 48.10	BNSF3033708	5XL	\$ 54.15	BNSF3033712	3XL TALL	\$ 52.94	BNSF3033717
			6XL	\$ 55.36	BNSF3033713	4XL TALL	\$ 54.15	BNSF3033718
						5XL TALL	\$ 55.36	BNSF3033719
						6XL TALL	\$ 56.57	BNSF3033720



## // VESTS



### CLASS II FABRIC FRONT / MESH BACK VESTS ZIPPER CLOSURE

ANSI / ISEA (107-2004) ANSI CLASS II SAFETY VEST; FABRIC FRONT / MESH BACK, NFPA 701 \*

SIZE	COST EA	SPTX PART #	SIZE	COST EA	SPTX PART #	SIZE	COST EA	SPTX PART #
S	\$ 35.48	BNSF2503705	2XL	\$ 37.68	BNSF2503709	LG TALL	\$ 37.68	BNSF2503714
M	\$ 35.48	BNSF2503706	3XL	\$ 39.05	BNSF2503710	XL TALL	\$ 37.68	BNSF2503715
L	\$ 35.48	BNSF2503707	4XL	\$ 39.88	BNSF2503711	2XL TALL	\$ 39.05	BNSF2503716
XL	\$ 35.48	BNSF2503708	5XL	\$ 42.63	BNSF2503712	3XL TALL	\$ 39.88	BNSF2503717
			6XL	\$ 47.47	BNSF2503713	4XL TALL	\$ 42.63	BNSF2503718
						5XL TALL	\$ 47.47	BNSF2503719
						6XL TALL	\$ 49.23	BNSF2503720



### CLASS III FABRIC FRONT / MESH BACK VESTS ZIPPER CLOSURE

ANSI / ISEA (107-2004) ANSI CLASS III SAFETY VEST; FABRIC FRONT / MESH BACK, NFPA 701 \*

SIZE	COST EA	SPTX PART #	SIZE	COST EA	SPTX PART #	SIZE	COST EA	SPTX PART #
S	\$ 43.18	BNSF2533705	2XL	\$ 45.38	BNSF2533709	LG TALL	\$ 45.38	BNSF2533714
M	\$ 43.18	BNSF2533706	3XL	\$ 46.75	BNSF2533710	XL TALL	\$ 45.38	BNSF2533715
L	\$ 43.18	BNSF2533707	4XL	\$ 47.58	BNSF2533711	2XL TALL	\$ 46.75	BNSF2533716
XL	\$ 43.18	BNSF2533708	5XL	\$ 49.23	BNSF2533712	3XL TALL	\$ 47.58	BNSF2533717
			6XL	\$ 49.67	BNSF2533713	4XL TALL	\$ 49.23	BNSF2533718
						5XL TALL	\$ 49.67	BNSF2533719
						6XL TALL	\$ 51.43	BNSF2533720



### CLASS II FABRIC FRONT / MESH BACK VESTS SNAP CLOSURE

ANSI / ISEA (107-2004) ANSI CLASS II SAFETY VEST; FABRIC FRONT / MESH BACK, NFPA 701 \*

SIZE	COST EA	SPTX PART #	SIZE	COST EA	SPTX PART #	SIZE	COST EA	SPTX PART #
S	\$ 39.02	BNSF2003705	2XL	\$ 41.44	BNSF2003709	LG TALL	\$ 41.44	BNSF2003714
M	\$ 39.02	BNSF2003706	3XL	\$ 42.96	BNSF2003710	XL TALL	\$ 41.44	BNSF2003715
L	\$ 39.02	BNSF2003707	4XL	\$ 43.86	BNSF2003711	2XL TALL	\$ 42.96	BNSF2003716
XL	\$ 39.02	BNSF2003708	5XL	\$ 46.89	BNSF2003712	3XL TALL	\$ 43.86	BNSF2003717
			6XL	\$ 52.21	BNSF2003713	4XL TALL	\$ 46.89	BNSF2003718
						5XL TALL	\$ 52.21	BNSF2003719
						6XL TALL	\$ 54.15	BNSF2003720



### CLASS III FABRIC FRONT / MESH BACK VESTS SNAP CLOSURE

ANSI / ISEA (107-2004) ANSI CLASS III SAFETY VEST; FABRIC FRONT / MESH BACK, NFPA 701 \*

SIZE	COST EA	SPTX PART #	SIZE	COST EA	SPTX PART #	SIZE	COST EA	SPTX PART #
S	\$ 52.33	BNSF2553705	2XL	\$ 53.54	BNSF2553709	LG TALL	\$ 53.54	BNSF2553714
M	\$ 52.33	BNSF2553706	3XL	\$ 56.27	BNSF2553710	XL TALL	\$ 53.54	BNSF2553715
L	\$ 52.33	BNSF2553707	4XL	\$ 57.17	BNSF2553711	2XL TALL	\$ 56.27	BNSF2553716
XL	\$ 52.33	BNSF2553708	5XL	\$ 58.99	BNSF2553712	3XL TALL	\$ 57.17	BNSF2553717
			6XL	\$ 59.47	BNSF2553713	4XL TALL	\$ 58.99	BNSF2553718
						5XL TALL	\$ 59.47	BNSF2553719
						6XL TALL	\$ 61.41	BNSF2553720

# HIGH VISIBILITY

## // VESTS



**CLASS II FABRIC UPPER / MESH LOWER FRONT – ALL-MESH BACK VESTS ZIPPER CLOSURE**  
ANSI / ISEA (107-2004) ANSI CLASS II SAFETY VEST; FABRIC UPPER / MESH LOWER FRONT - ALL-MESH BACK, NFPA 701 \*

SIZE	COST EA	SPTX PART #	SIZE	COST EA	SPTX PART #	SIZE	COST EA	SPTX PART #
S	\$ 33.06	BNSF4503705	2XL	\$ 35.26	BNSF4503709	LG TALL	\$ 35.26	BNSF4503714
M	\$ 33.06	BNSF4503706	3XL	\$ 36.36	BNSF4503710	XL TALL	\$ 35.26	BNSF4503715
L	\$ 33.06	BNSF4503707	4XL	\$ 37.46	BNSF4503711	2XL TALL	\$ 36.36	BNSF4503716
XL	\$ 33.06	BNSF4503708	5XL	\$ 38.56	BNSF4503712	3XL TALL	\$ 37.46	BNSF4503717
			6XL	\$ 39.66	BNSF4503713	4XL TALL	\$ 38.56	BNSF4503718
						5XL TALL	\$ 39.66	BNSF4503719
						6XL TALL	\$ 40.76	BNSF4503720



**CLASS II FABRIC UPPER / MESH LOWER FRONT – ALL-MESH BACK VESTS SNAP CLOSURE**  
ANSI / ISEA (107-2004) ANSI CLASS II SAFETY VEST; FABRIC UPPER / MESH LOWER FRONT - ALL-MESH BACK, NFPA 701 \*

SIZE	COST EA	SPTX PART #	SIZE	COST EA	SPTX PART #	SIZE	COST EA	SPTX PART #
S	\$ 36.36	BNSF4003705	2XL	\$ 38.78	BNSF4003709	LG TALL	\$ 38.78	BNSF4003714
M	\$ 36.36	BNSF4003706	3XL	\$ 39.99	BNSF4003710	XL TALL	\$ 38.78	BNSF4003715
L	\$ 36.36	BNSF4003707	4XL	\$ 41.20	BNSF4003711	2XL TALL	\$ 39.99	BNSF4003716
XL	\$ 36.36	BNSF4003708	5XL	\$ 42.41	BNSF4003712	3XL TALL	\$ 41.20	BNSF4003717
			6XL	\$ 43.62	BNSF4003713	4XL TALL	\$ 42.41	BNSF4003718
						5XL TALL	\$ 43.62	BNSF4003719
						6XL TALL	\$ 44.83	BNSF4003720



**CLASS III FABRIC UPPER / MESH LOWER FRONT ALL-MESH BACK VESTS ZIPPER CLOSURE**  
ANSI / ISEA (107-2004) ANSI CLASS III SAFETY VEST; FABRIC UPPER / MESH LOWER FRONT - ALL-MESH BACK, NFPA 701 \*

SIZE	COST EA	SPTX PART #	SIZE	COST EA	SPTX PART #	SIZE	COST EA	SPTX PART #
S	\$ 39.42	BNSF4533705	2XL	\$ 41.23	BNSF4533709	LG TALL	\$ 41.23	BNSF4533714
M	\$ 39.42	BNSF4533706	3XL	\$ 43.05	BNSF4533710	XL TALL	\$ 41.23	BNSF4533715
L	\$ 39.42	BNSF4533707	4XL	\$ 45.16	BNSF4533711	2XL TALL	\$ 43.05	BNSF4533716
XL	\$ 39.42	BNSF4533708	5XL	\$ 47.36	BNSF4533712	3XL TALL	\$ 45.16	BNSF4533717
			6XL	\$ 49.56	BNSF4533713	4XL TALL	\$ 47.36	BNSF4533718
						5XL TALL	\$ 49.56	BNSF4533719
						6XL TALL	\$ 51.76	BNSF4533720



**CLASS III FABRIC UPPER / MESH LOWER FRONT ALL-MESH BACK VESTS SNAP CLOSURE**  
ANSI / ISEA (107-2004) ANSI CLASS III SAFETY VEST; FABRIC UPPER / MESH LOWER FRONT - ALL-MESH BACK, NFPA 701 \*

SIZE	COST EA	SPTX PART #	SIZE	COST EA	SPTX PART #	SIZE	COST EA	SPTX PART #
S	\$ 43.36	BNSF4553705	2XL	\$ 45.36	BNSF4553709	LG TALL	\$ 45.36	BNSF4553714
M	\$ 43.36	BNSF4553706	3XL	\$ 47.36	BNSF4553710	XL TALL	\$ 45.36	BNSF4553715
L	\$ 43.36	BNSF4553707	4XL	\$ 49.67	BNSF4553711	2XL TALL	\$ 47.36	BNSF4553716
XL	\$ 43.36	BNSF4553708	5XL	\$ 52.09	BNSF4553712	3XL TALL	\$ 49.67	BNSF4553717
			6XL	\$ 54.51	BNSF4553713	4XL TALL	\$ 52.09	BNSF4553718
						5XL TALL	\$ 54.51	BNSF4553719
						6XL TALL	\$ 56.93	BNSF4553720





## // VESTS



**CLASS II ALL-MESH 10-POCKET SURVEYORS VESTS ZIPPER CLOSURE WITH MAP POCKET**  
ANSI / ISEA (107-2004) ANSI CLASS II 10-POCKET SURVEYORS SAFETY VEST WITH MAP POCKET; ALL-MESH, NFPA 701 \*

SIZE	COST EA	SPTX PART #	SIZE	COST EA	SPTX PART #	SIZE	COST EA	SPTX PART #
S	\$ 57.48	BNSF1573705	2XL	\$ 59.68	BNSF1573709	LG TALL	\$ 59.68	BNSF1573714
M	\$ 57.48	BNSF1573706	3XL	\$ 61.88	BNSF1573710	XL TALL	\$ 59.68	BNSF1573715
L	\$ 57.48	BNSF1573707	4XL	\$ 65.18	BNSF1573711	2XL TALL	\$ 61.88	BNSF1573716
XL	\$ 57.48	BNSF1573708	5XL	\$ 66.28	BNSF1573712	3XL TALL	\$ 65.18	BNSF1573717
			6XL	\$ 69.58	BNSF1573713	4XL TALL	\$ 66.28	BNSF1573718
						5XL TALL	\$ 69.58	BNSF1573719
						6XL TALL	\$ 73.06	BNSF1573720



**CLASS III ALL-MESH 10-POCKET SURVEYORS VESTS ZIPPER CLOSURE WITH MAP POCKET**  
ANSI / ISEA (107-2004) ANSI CLASS III 10-POCKET SURVEYORS SAFETY VEST WITH MAP POCKET; ALL-MESH, NFPA 701 \*

SIZE	COST EA	SPTX PART #	SIZE	COST EA	SPTX PART #	SIZE	COST EA	SPTX PART #
S	\$ 69.03	BNSF1593705	2XL	\$ 71.23	BNSF1593709	LG TALL	\$ 71.23	BNSF1593714
M	\$ 69.03	BNSF1593706	3XL	\$ 73.43	BNSF1593710	XL TALL	\$ 71.23	BNSF1593715
L	\$ 69.03	BNSF1593707	4XL	\$ 75.63	BNSF1593711	2XL TALL	\$ 73.43	BNSF1593716
XL	\$ 69.03	BNSF1593708	5XL	\$ 77.83	BNSF1593712	3XL TALL	\$ 75.63	BNSF1593717
			6XL	\$ 80.03	BNSF1593713	4XL TALL	\$ 77.83	BNSF1593718
						5XL TALL	\$ 80.03	BNSF1593719
						6XL TALL	\$ 84.03	BNSF1593720



**CLASS II 10-POCKET ALL-MESH TEAR-AWAY SURVEYORS VEST ZIPPER CLOSURE WITH MAP POCKET**  
ANSI / ISEA (107-2004) ANSI CLASS II 10-POCKET ALL-MESH TEAR-AWAY SURVEYORS SAFETY VEST WITH MAP POCKET; NFPA 701 \*

SIZE	COST EA	SPTX PART #	SIZE	COST EA	SPTX PART #	SIZE	COST EA	SPTX PART #
S	\$ 67.48	BNSF1673705	2XL	\$ 69.68	BNSF1673709	LG TALL	\$ 69.68	BNSF1673714
M	\$ 67.48	BNSF1673706	3XL	\$ 71.88	BNSF1673710	XL TALL	\$ 69.68	BNSF1673715
L	\$ 67.48	BNSF1673707	4XL	\$ 75.18	BNSF1673711	2XL TALL	\$ 71.88	BNSF1673716
XL	\$ 67.48	BNSF1673708	5XL	\$ 76.28	BNSF1673712	3XL TALL	\$ 75.18	BNSF1673717
			6XL	\$ 79.58	BNSF1673713	4XL TALL	\$ 77.53	BNSF1673718
						5XL TALL	\$ 79.58	BNSF1673719
						6XL TALL	\$ 83.06	BNSF1673720



**CLASS III 10-POCKET ALL-MESH TEAR-AWAY SURVEYORS VEST ZIPPER CLOSURE WITH MAP POCKET**  
ANSI / ISEA (107-2004) ANSI CLASS III 10-POCKET ALL-MESH TEAR-AWAY SURVEYORS SAFETY VEST WITH MAP POCKET; NFPA 701 \*

SIZE	COST EA	SPTX PART #	SIZE	COST EA	SPTX PART #	SIZE	COST EA	SPTX PART #
S	\$ 79.03	BNSF1693705	2XL	\$ 81.23	BNSF1693709	LG TALL	\$ 81.23	BNSF1693714
M	\$ 79.03	BNSF1693706	3XL	\$ 83.43	BNSF1693710	XL TALL	\$ 81.23	BNSF1693715
L	\$ 79.03	BNSF1693707	4XL	\$ 85.63	BNSF1693711	2XL TALL	\$ 83.43	BNSF1693716
XL	\$ 79.03	BNSF1693708	5XL	\$ 87.83	BNSF1693712	3XL TALL	\$ 85.63	BNSF1693717
			6XL	\$ 90.03	BNSF1693713	4XL TALL	\$ 87.83	BNSF1693718
						5XL TALL	\$ 90.03	BNSF1693719
						6XL TALL	\$ 94.03	BNSF1693720

# HIGH VISIBILITY

## // VESTS



### CLASS II FABRIC FRONT / MESH BACK 5-POINT TEAR-AWAY SAFETY VESTS

ANSI / ISEA (107-2004) ANSI CLASS II SAFETY VEST; TEAR-AWAY; FABRIC FRONT / MESH BACK, NFPA 701 \*

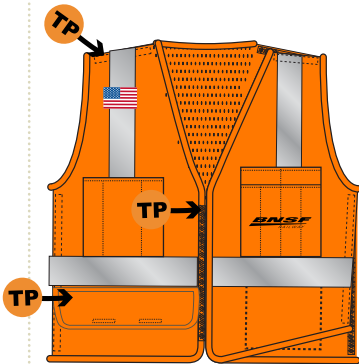
SIZE	COST EA	SPTX PART #	SIZE	COST EA	SPTX PART #	SIZE	COST EA	SPTX PART #
S	\$ 43.86	BNSF5503705	2XL	\$ 46.28	BNSF5503709	LG TALL	\$ 46.28	BNSF5503714
M	\$ 43.86	BNSF5503706	3XL	\$ 47.49	BNSF5503710	XL TALL	\$ 46.28	BNSF5503715
L	\$ 43.86	BNSF5503707	4XL	\$ 48.70	BNSF5503711	2XL TALL	\$ 47.49	BNSF5503716
XL	\$ 43.86	BNSF5503708	5XL	\$ 49.91	BNSF5503712	3XL TALL	\$ 48.70	BNSF5503717
			6XL	\$ 51.12	BNSF5503713	4XL TALL	\$ 49.91	BNSF5503718
						5XL TALL	\$ 51.12	BNSF5503719
						6XL TALL	\$ 52.33	BNSF5503720



### CLASS III FABRIC FRONT / MESH BACK 5-POINT TEAR-AWAY SAFETY VESTS

ANSI / ISEA (107-2004) ANSI CLASS III SAFETY VEST; TEAR-AWAY; FABRIC FRONT / MESH BACK, NFPA 701 \*

SIZE	COST EA	SPTX PART #	SIZE	COST EA	SPTX PART #	SIZE	COST EA	SPTX PART #
S	\$ 58.38	BNSF5303705	2XL	\$ 60.80	BNSF5303709	LG TALL	\$ 60.80	BNSF5303714
M	\$ 58.38	BNSF5303706	3XL	\$ 62.01	BNSF5303710	XL TALL	\$ 60.80	BNSF5303715
L	\$ 58.38	BNSF5303707	4XL	\$ 63.22	BNSF5303711	2XL TALL	\$ 62.01	BNSF5303716
XL	\$ 58.38	BNSF5303708	5XL	\$ 64.43	BNSF5303712	3XL TALL	\$ 63.22	BNSF5303717
			6XL	\$ 65.64	BNSF5303713	4XL TALL	\$ 64.43	BNSF5303718
						5XL TALL	\$ 65.64	BNSF5303719
						6XL TALL	\$ 66.85	BNSF5303720



### CLASS II FABRIC FRONT / MESH BACK 5-POINT TEAR AWAY 5 POCKET SAFETY VESTS

ANSI / ISEA (107-2004) ANSI CLASS II 5 POCKET FABRIC FRONT MESH BACK TEAR AWAY; NFPA 701 \*

SIZE	COST EA	SPTX PART #	SIZE	COST EA	SPTX PART #	SIZE	COST EA	SPTX PART #
S	\$ 64.25	BNSF5553705	2XL	\$ 67.25	BNSF5553709	LG TALL	\$ 67.25	BNSF5553714
M	\$ 64.25	BNSF5553706	3XL	\$ 69.25	BNSF5553710	XL TALL	\$ 67.25	BNSF5553715
L	\$ 64.25	BNSF5553707	4XL	\$ 73.25	BNSF5553711	2XL TALL	\$ 69.25	BNSF5553716
XL	\$ 64.25	BNSF5553708	5XL	\$ 76.25	BNSF5553712	3XL TALL	\$ 73.25	BNSF5553717
			6XL	\$ 78.25	BNSF5553713	4XL TALL	\$ 76.25	BNSF5553718
						5XL TALL	\$ 78.25	BNSF5553719
						6XL TALL	\$ 82.25	BNSF5553720



### CLASS II ALL-MESH ECONOMY 5-POINT TEAR AWAY CRAFT SAFETY VESTS

ANSI / ISEA (107-2004) ALL-MESH CLASS II 5-POINT TEAR-AWAY; CRAFT SAFETY VEST; NFPA 701 \*

SIZE	COST EA	SPTX PART #	SIZE	COST EA	SPTX PART #	SIZE	COST EA	SPTX PART #
S	\$ 21.75	BNSF5903705	2XL	\$ 23.75	BNSF5903709	LG TALL	\$ 23.75	BNSF5903714
M	\$ 21.75	BNSF5903706	3XL	\$ 25.75	BNSF5903710	XL TALL	\$ 23.75	BNSF5903715
L	\$ 21.75	BNSF5903707	4XL	\$ 27.25	BNSF5903711	2XL TALL	\$ 25.75	BNSF5903716
XL	\$ 21.75	BNSF5903708	5XL	\$ 29.75	BNSF5903712	3XL TALL	\$ 27.25	BNSF5903717
			6XL	\$ 31.75	BNSF5903713	4XL TALL	\$ 29.75	BNSF5903718
						5XL TALL	\$ 31.75	BNSF5903719
						6XL TALL	\$ 33.75	BNSF5903720



**CLASS III ALL-MESH ECONOMY 5-POINT TEAR AWAY CRAFT SAFETY VESTS**  
ANSI / ISEA (107-2004) ALL-MESH CLASS III 5-POINT TEAR-AWAY; CRAFT SAFETY VEST; NFPA 701 \*

SIZE	COST EA	SPTX PART #	SIZE	COST EA	SPTX PART #	SIZE	COST EA	SPTX PART #
S	\$ 26.75	BNSF5703705	2XL	\$ 28.75	BNSF5703709	LG TALL	\$ 28.75	BNSF5703714
M	\$ 26.75	BNSF5703706	3XL	\$ 30.75	BNSF5703710	XL TALL	\$ 28.75	BNSF5703715
L	\$ 26.75	BNSF5703707	4XL	\$ 32.75	BNSF5703711	2XL TALL	\$ 30.75	BNSF5703716
XL	\$ 26.75	BNSF5703708	5XL	\$ 34.75	BNSF5703712	3XL TALL	\$ 32.75	BNSF5703717
			6XL	\$ 36.75	BNSF5703713	4XL TALL	\$ 34.75	BNSF5703718
						5XL TALL	\$ 36.75	BNSF5703719
						6XL TALL	\$ 38.75	BNSF5703720



**CLASS II ALL-MESH 5-POINT TEAR AWAY CRAFT 5-POCKET FOREMAN'S SAFETY VESTS**  
ANSI / ISEA (107-2004) ALL-MESH CLASS II 5-POINT TEAR-AWAY; CRAFT 5-POCKET FOREMAN'S SAFETY VEST; NFPA 701 \*

SIZE	COST EA	SPTX PART #	SIZE	COST EA	SPTX PART #	SIZE	COST EA	SPTX PART #
S	\$ 49.25	BNSF5953705	2XL	\$ 52.95	BNSF5953709	LG TALL	\$ 52.95	BNSF5953714
M	\$ 49.25	BNSF5953706	3XL	\$ 55.25	BNSF5953710	XL TALL	\$ 52.95	BNSF5953715
L	\$ 49.25	BNSF5953707	4XL	\$ 57.25	BNSF5953711	2XL TALL	\$ 55.25	BNSF5953716
XL	\$ 49.25	BNSF5953708	5XL	\$ 59.25	BNSF5953712	3XL TALL	\$ 57.25	BNSF5953717
			6XL	\$ 61.25	BNSF5953713	4XL TALL	\$ 59.25	BNSF5953718
						5XL TALL	\$ 61.25	BNSF5953719
						6XL TALL	\$ 63.25	BNSF5953720



**CLASS II ALL-MESH CRAFT SPECIAL PANEL BOTTOM BACK SAFETY VESTS**  
ANSI / ISEA (107-2004) ALL-MESH CLASS II; CRAFT SAFETY VEST; NFPA 701 \*

SIZE	COST EA	SPTX PART #	SIZE	COST EA	SPTX PART #	SIZE	COST EA	SPTX PART #
S	\$ 31.95	BNSF1513705	2XL	\$ 32.95	BNSF1513709	LG TALL	\$ 32.95	BNSF1513714
M	\$ 31.95	BNSF1513706	3XL	\$ 33.95	BNSF1513710	XL TALL	\$ 33.95	BNSF1513715
L	\$ 31.95	BNSF1513707	4XL	\$ 34.95	BNSF1513711	2XL TALL	\$ 34.95	BNSF1513716
XL	\$ 31.95	BNSF1513708	5XL	\$ 35.95	BNSF1513712	3XL TALL	\$ 35.95	BNSF1513717
			6XL	\$ 36.95	BNSF1513713	4XL TALL	\$ 36.95	BNSF1513718
						5XL TALL	\$ 37.95	BNSF1513719
						6XL TALL	\$ 38.95	BNSF1513720



**CLASS III ALL-MESH CRAFT SPECIAL PANEL BOTTOM BACK SAFETY VESTS**  
ANSI / ISEA (107-2004) ALL-MESH CLASS III; CRAFT SAFETY VEST; NFPA 701 \*

SIZE	COST EA	SPTX PART #	SIZE	COST EA	SPTX PART #	SIZE	COST EA	SPTX PART #
S	\$ 37.95	BNSF1553705	2XL	\$ 38.95	BNSF1553709	LG TALL	\$ 38.95	BNSF1553714
M	\$ 37.95	BNSF1553706	3XL	\$ 39.95	BNSF1553710	XL TALL	\$ 39.95	BNSF1553715
L	\$ 37.95	BNSF1553707	4XL	\$ 40.95	BNSF1553711	2XL TALL	\$ 40.95	BNSF1553716
XL	\$ 37.95	BNSF1553708	5XL	\$ 41.95	BNSF1553712	3XL TALL	\$ 41.95	BNSF1553717
			6XL	\$ 42.95	BNSF1553713	4XL TALL	\$ 42.95	BNSF1553718
						5XL TALL	\$ 43.95	BNSF1553719
						6XL TALL	\$ 44.95	BNSF1553720



**EIC**

**LOOKOUT**

**NEW HIRE**

SIZE	COST EA	SPTX PART #
OS	\$ 15.00	BNSFEIC-PANEL

SIZE	COST EA	SPTX PART #
OS	\$ 15.00	BNSFLO-PANEL

SIZE	COST EA	SPTX PART #
OS	\$ 15.00	BNSFNH-PANEL



# HIGH VISIBILITY

## // T-SHIRTS



### CLASS II 100% POLYESTER STANDARD SHORT SLEEVE T-SHIRTS WITH POCKET AND SEGMENTED REFLECTIVE TAPE

ANSI / ISEA (107-2004) ANSI CLASS II 100% POLYESTER STANDARD T-SHIRT, SHORT SLEEVES, ORANGE; WITH POCKET AND SEGMENTED REFLECTIVE TRIM; NFPA 701 \*

SIZE	COST EA	SPTX PART #	SIZE	COST EA	SPTX PART #
S	\$ 24.48	BNSF7053705	2XL	\$ 27.78	BNSF7053709
M	\$ 24.48	BNSF7053706	3XL	\$ 28.88	BNSF7053710
L	\$ 24.48	BNSF7053707	4XL	\$ 29.98	BNSF7053711
XL	\$ 24.48	BNSF7053708	5XL	\$ 31.08	BNSF7053712
			6XL	\$ 32.18	BNSF7053713



### CLASS II 100% POLYESTER ULTRA COOL MESH SHORT SLEEVE TEE-SHIRTS WITH POCKET AND SEGMENTED REFLECTIVE TAPE

ANSI / ISEA (107-2004) ANSI CLASS II 100% POLYESTER ULTRA COOL MESH T-SHIRT, SHORT SLEEVES, ORANGE; WITH POCKET AND SEGMENTED REFLECTIVE TRIM; NFPA 701 \*

SIZE	COST EA	SPTX PART #	SIZE	COST EA	SPTX PART #
S	\$ 26.92	BNSF7023705	2XL	\$ 30.55	BNSF7023709
M	\$ 26.92	BNSF7023706	3XL	\$ 31.76	BNSF7023710
L	\$ 26.92	BNSF7023707	4XL	\$ 32.97	BNSF7023711
XL	\$ 26.92	BNSF7023708	5XL	\$ 34.18	BNSF7023712
			6XL	\$ 35.39	BNSF7023713



### CLASS III 100% POLYESTER STANDARD SHORT SLEEVE T-SHIRTS WITH POCKET AND SEGMENTED REFLECTIVE TAPE

ANSI / ISEA (107-2004) ANSI CLASS III 100% POLYESTER STANDARD T-SHIRT, SHORT SLEEVES, ORANGE; WITH POCKET AND SEGMENTED REFLECTIVE TRIM; NFPA 701 \*

SIZE	COST EA	SPTX PART #	SIZE	COST EA	SPTX PART #
S	\$ 29.98	BNSF7073705	2XL	\$ 33.28	BNSF7073709
M	\$ 29.98	BNSF7073706	3XL	\$ 34.38	BNSF7073710
L	\$ 29.98	BNSF7073707	4XL	\$ 35.48	BNSF7073711
XL	\$ 29.98	BNSF7073708	5XL	\$ 36.58	BNSF7073712
			6XL	\$ 37.68	BNSF7073713



### CLASS III 100% POLYESTER ULTRA COOL MESH SHORT SLEEVE TEE-SHIRTS WITH POCKET AND SEGMENTED REFLECTIVE TAPE

ANSI / ISEA (107-2004) ANSI CLASS III 100% POLYESTER ULTRA COOL MESH T-SHIRT, SHORT SLEEVES, ORANGE; WITH POCKET AND SEGMENTED REFLECTIVE TRIM; NFPA 701 \*

SIZE	COST EA	SPTX PART #	SIZE	COST EA	SPTX PART #
S	\$ 31.76	BNSF7043705	2XL	\$ 35.39	BNSF7043709
M	\$ 31.76	BNSF7043706	3XL	\$ 36.60	BNSF7043710
L	\$ 31.76	BNSF7043707	4XL	\$ 37.81	BNSF7043711
XL	\$ 31.76	BNSF7043708	5XL	\$ 39.02	BNSF7043712
			6XL	\$ 40.23	BNSF7043713



## // T-SHIRTS



### CLASS II 100% POLYESTER STANDARD LONG SLEEVE T-SHIRTS WITH POCKET AND SEGMENTED REFLECTIVE TAPE

ANSI / ISEA (107-2004) ANSI CLASS II 100% POLYESTER STANDARD T-SHIRT, LONG SLEEVES, ORANGE; WITH POCKET AND SEGMENTED REFLECTIVE TRIM; NFPA 701 \*

SIZE	COST EA	SPTX PART #	SIZE	COST EA	SPTX PART #
S	\$ 29.98	BNSF7353705	2XL	\$ 32.18	BNSF7353709
M	\$ 29.98	BNSF7353706	3XL	\$ 33.28	BNSF7353710
L	\$ 29.98	BNSF7353707	4XL	\$ 34.38	BNSF7353711
XL	\$ 29.98	BNSF7353708	5XL	\$ 35.48	BNSF7353712
			6XL	\$ 36.58	BNSF7353713



### CLASS II 100% POLYESTER ULTRA COOL MESH LONG SLEEVE TEE-SHIRTS WITH POCKET AND SEGMENTED REFLECTIVE TAPE

ANSI / ISEA (107-2004) ANSI CLASS II 100% POLYESTER ULTRA COOL MESH T-SHIRT, LONG SLEEVES, ORANGE; WITH POCKET AND SEGMENTED REFLECTIVE TRIM; NFPA 701 \*

SIZE	COST EA	SPTX PART #	SIZE	COST EA	SPTX PART #
S	\$ 31.76	BNSF7323705	2XL	\$ 34.18	BNSF7323709
M	\$ 31.76	BNSF7323706	3XL	\$ 35.39	BNSF7323710
L	\$ 31.76	BNSF7323707	4XL	\$ 36.60	BNSF7323711
XL	\$ 31.76	BNSF7323708	5XL	\$ 37.81	BNSF7323712
			6XL	\$ 39.02	BNSF7323713



### CLASS III 100% POLYESTER STANDARD LONG SLEEVE T-SHIRTS WITH POCKET AND SEGMENTED REFLECTIVE TAPE

ANSI / ISEA (107-2004) ANSI CLASS III 100% POLYESTER STANDARD T-SHIRT, LONG SLEEVE, ORANGE; WITH POCKET AND SEGMENTED REFLECTIVE TRIM; NFPA 701 \*

SIZE	COST EA	SPTX PART #	SIZE	COST EA	SPTX PART #
S	\$ 37.68	BNSF7093705	2XL	\$ 40.98	BNSF7093709
M	\$ 37.68	BNSF7093706	3XL	\$ 42.08	BNSF7093710
L	\$ 37.68	BNSF7093707	4XL	\$ 43.18	BNSF7093711
XL	\$ 37.68	BNSF7093708	5XL	\$ 44.28	BNSF7093712
			6XL	\$ 45.38	BNSF7093713



### CLASS III 100% POLYESTER ULTRA COOL MESH LONG SLEEVE TEE-SHIRTS WITH POCKET AND SEGMENTED REFLECTIVE TAPE

ANSI / ISEA (107-2004) ANSI CLASS III 100% POLYESTER ULTRA COOL MESH T-SHIRT, LONG SLEEVE, ORANGE; WITH POCKET AND SEGMENTED REFLECTIVE TRIM; NFPA 701 \*

SIZE	COST EA	SPTX PART #	SIZE	COST EA	SPTX PART #
S	\$ 37.81	BNSF7343705	2XL	\$ 53.54	BNSF7343709
M	\$ 37.81	BNSF7343706	3XL	\$ 56.27	BNSF7343710
L	\$ 37.81	BNSF7343707	4XL	\$ 57.17	BNSF7343711
XL	\$ 37.81	BNSF7343708	5XL	\$ 58.99	BNSF7343712
			6XL	\$ 59.47	BNSF7343713

# HIGH VISIBILITY

## // T-SHIRTS



**CLASS E 100% POLYESTER STANDARD SHORT SLEEVE T-SHIRTS WITH SEGMENTED REFLECTIVE TAPE**  
ANSI / ISEA (107-2004) ANSI CLASS E 100% POLYESTER STANDARD T-SHIRT, SHORT SLEEVES, ORANGE; WITH SEGMENTED REFLECTIVE TRIM; NFPA 701 \*

SIZE	COST EA	SPTX PART #	SIZE	COST EA	SPTX PART #
S	\$ 15.68	BNSF7203705	2XL	\$ 17.88	BNSF7203709
M	\$ 15.68	BNSF7203706	3XL	\$ 18.98	BNSF7203710
L	\$ 15.68	BNSF7203707	4XL	\$ 20.08	BNSF7203711
XL	\$ 15.68	BNSF7203708	5XL	\$ 21.18	BNSF7203712
			6XL	\$ 22.28	BNSF7203713



**CLASS E 100% POLYESTER ULTRA COOL MESH SHORT SLEEVE T-SHIRTS WITH SEGMENTED REFLECTIVE TAPE**

ANSI / ISEA (107-2004) ANSI CLASS E 100% POLYESTER ULTRA COOL MESH T-SHIRT, SHORT SLEEVES, ORANGE; WITH SEGMENTED REFLECTIVE TRIM; NFPA 701 \*

SIZE	COST EA	SPTX PART #	SIZE	COST EA	SPTX PART #
S	\$ 17.88	BNSF7223705	2XL	\$ 20.37	BNSF7223709
M	\$ 17.88	BNSF7223706	3XL	\$ 21.18	BNSF7223710
L	\$ 17.88	BNSF7223707	4XL	\$ 22.28	BNSF7223711
XL	\$ 17.88	BNSF7223708	5XL	\$ 23.28	BNSF7223712
			6XL	\$ 24.48	BNSF7223713



**CLASS E 100% POLYESTER STANDARD LONG SLEEVE T-SHIRTS WITH SEGMENTED REFLECTIVE TAPE**

ANSI / ISEA (107-2004) ANSI CLASS E 100% POLYESTER STANDARD T-SHIRT, LONG SLEEVES, ORANGE; WITH SEGMENTED REFLECTIVE TRIM; NFPA 701 \*

SIZE	COST EA	SPTX PART #	SIZE	COST EA	SPTX PART #
S	\$ 22.28	BNSF7403705	2XL	\$ 24.48	BNSF7403709
M	\$ 22.28	BNSF7403706	3XL	\$ 25.58	BNSF7403710
L	\$ 22.28	BNSF7403707	4XL	\$ 26.68	BNSF7403711
XL	\$ 22.28	BNSF7403708	5XL	\$ 27.78	BNSF7403712
			6XL	\$ 28.88	BNSF7403713



**CLASS E 100% POLYESTER ULTRA COOL MESH LONG SLEEVE T-SHIRTS WITH SEGMENTED REFLECTIVE TAPE**

ANSI / ISEA (107-2004) ANSI CLASS E 100% POLYESTER ULTRA COOL MESH T-SHIRT, LONG SLEEVES, ORANGE; WITH SEGMENTED REFLECTIVE TRIM; NFPA 701 \*

SIZE	COST EA	SPTX PART #	SIZE	COST EA	SPTX PART #
S	\$ 24.48	BNSF7423705	2XL	\$ 26.68	BNSF7423709
M	\$ 24.48	BNSF7423706	3XL	\$ 27.78	BNSF7423710
L	\$ 24.48	BNSF7423707	4XL	\$ 28.88	BNSF7423711
XL	\$ 24.48	BNSF7423708	5XL	\$ 29.98	BNSF7423712
			6XL	\$ 31.08	BNSF7423713





## // POLOS



### CLASS II 100% POLYESTER PIQUE SHORT SLEEVE POLO SHIRT WITH POCKET AND SEGMENTED REFLECTIVE TAPE

ANSI / ISEA (107-2004) ANSI CLASS II PIQUE SHORT SLEEVE POLO SHIRT; ORANGE; WITH POCKET AND SEGMENTED REFLECTIVE TAPE; NFPA 701 \*

SIZE	COST EA	SPTX PART #	SIZE	COST EA	SPTX PART #
S	\$ 32.97	BNSF7753705	2XL	\$ 35.39	BNSF7753709
M	\$ 32.97	BNSF7753706	3XL	\$ 37.81	BNSF7753710
L	\$ 32.97	BNSF7753707	4XL	\$ 40.23	BNSF7753711
XL	\$ 32.97	BNSF7753708	5XL	\$ 42.65	BNSF7753712
			6XL	\$ 45.07	BNSF7753713



### CLASS III 100% POLYESTER PIQUE SHORT SLEEVE POLO SHIRT WITH POCKET AND SEGMENTED REFLECTIVE TAPE

ANSI / ISEA (107-2004) ANSI CLASS III PIQUE SHORT SLEEVE POLO SHIRT; ORANGE; WITH POCKET AND SEGMENTED REFLECTIVE TAPE; NFPA 701 \*

SIZE	COST EA	SPTX PART #	SIZE	COST EA	SPTX PART #
S	\$ 39.02	BNSF7793705	2XL	\$ 41.44	BNSF7793709
M	\$ 39.02	BNSF7793706	3XL	\$ 43.86	BNSF7793710
L	\$ 39.02	BNSF7793707	4XL	\$ 46.28	BNSF7793711
XL	\$ 39.02	BNSF7793708	5XL	\$ 48.70	BNSF7793712
			6XL	\$ 51.12	BNSF7793713

## // WORK SHIRTS



### CLASS III 100% POLYESTER ALL-FABRIC SHORT SLEEVE WORK SHIRT BUTTON CLOSURE

ANSI / ISEA (107-2004) ANSI CLASS III SHORT SLEEVE WORK SHIRT; ALL-FABRIC, NFPA 701 \*

SIZE	COST EA	SPTX PART #	SIZE	COST EA	SPTX PART #	SIZE	COST EA	SPTX PART #
S	\$ 46.48	BNSF3703705	2XL	\$ 48.68	BNSF3703709	LG TALL	\$ 35.26	BNSF3703714
M	\$ 46.48	BNSF3703706	3XL	\$ 50.88	BNSF3703710	XL TALL	\$ 48.68	BNSF3703715
L	\$ 46.48	BNSF3703707	4XL	\$ 53.08	BNSF3703711	2XL TALL	\$ 50.88	BNSF3703716
XL	\$ 46.48	BNSF3703708	5XL	\$ 55.28	BNSF3703712	3XL TALL	\$ 53.08	BNSF3703717
			6XL	\$ 57.48	BNSF3703713	4XL TALL	\$ 55.28	BNSF3703718
						5XL TALL	\$ 57.48	BNSF3703719
						6XL TALL	\$ 59.68	BNSF3703720



### CLASS III 100% POLYESTER ALL-FABRIC LONG SLEEVE WORK SHIRT BUTTON CLOSURE

ANSI / ISEA (107-2004) ANSI CLASS III LONG SLEEVE WORK SHIRT; ALL-FABRIC, NFPA 701 \*

SIZE	COST EA	SPTX PART #	SIZE	COST EA	SPTX PART #	SIZE	COST EA	SPTX PART #
S	\$ 55.28	BNSF3903705	2XL	\$ 57.48	BNSF3903709	LG TALL	\$ 57.48	BNSF3903714
M	\$ 55.28	BNSF3903706	3XL	\$ 59.68	BNSF3903710	XL TALL	\$ 57.48	BNSF3903715
L	\$ 55.28	BNSF3903707	4XL	\$ 61.88	BNSF3903711	2XL TALL	\$ 59.68	BNSF3903716
XL	\$ 55.28	BNSF3903708	5XL	\$ 64.08	BNSF3903712	3XL TALL	\$ 61.88	BNSF3903717
			6XL	\$ 66.28	BNSF3903713	4XL TALL	\$ 64.08	BNSF3903718
						5XL TALL	\$ 66.28	BNSF3903719
						6XL TALL	\$ 68.48	BNSF903720

# HIGH VISIBILITY

## // LIGHT OUTERWEAR



### CLASS II 100% POLYESTER LONG SLEEVE CREWNECK SWEATSHIRT WITH SEGMENTED REFLECTIVE TAPE

ANSI / ISEA (107-2004) ANSI CLASS II 100% POLYESTER LONG SLEEVE CREWNECK SWEATSHIRT; ORANGE; WITH SEGMENTED REFLECTIVE TRIM; NFPA 701 \*

SIZE	COST EA	SPTX PART #	SIZE	COST EA	SPTX PART #
S	\$ 43.86	BNSF7503705	2XL	\$ 46.28	BNSF7503709
M	\$ 43.86	BNSF7503706	3XL	\$ 48.70	BNSF7503710
L	\$ 43.86	BNSF7503707	4XL	\$ 51.12	BNSF7503711
XL	\$ 43.86	BNSF7503708	5XL	\$ 53.54	BNSF7503712
			6XL	\$ 55.96	BNSF7503713



### CLASS III 100% POLYESTER LONG SLEEVE CREWNECK SWEATSHIRT WITH SEGMENTED REFLECTIVE TAPE

ANSI / ISEA (107-2004) ANSI CLASS III 100% POLYESTER LONG SLEEVE CREWNECK SWEATSHIRT; ORANGE; WITH SEGMENTED REFLECTIVE TRIM; NFPA 701 \*

SIZE	COST EA	SPTX PART #	SIZE	COST EA	SPTX PART #
S	\$ 49.91	BNSF7653705	2XL	\$ 52.33	BNSF7653709
M	\$ 49.91	BNSF7653706	3XL	\$ 54.75	BNSF7653710
L	\$ 49.91	BNSF7653707	4XL	\$ 57.17	BNSF7653711
XL	\$ 49.91	BNSF7653708	5XL	\$ 59.59	BNSF7653712
			6XL	\$ 62.01	BNSF7653713



### CLASS II 100% POLYESTER LONG SLEEVE HOODED SWEATSHIRT WITH SEGMENTED REFLECTIVE TAPE

ANSI / ISEA (107-2004) ANSI CLASS II 100% POLYESTER LONG SLEEVE HOODED SWEATSHIRT; ORANGE; WITH SEGMENTED REFLECTIVE TRIM; NFPA 701 \*

SIZE	COST EA	SPTX PART #	SIZE	COST EA	SPTX PART #
S	\$ 48.68	BNSF7103705	2XL	\$ 50.88	BNSF7103709
M	\$ 48.68	BNSF7103706	3XL	\$ 53.08	BNSF7103710
L	\$ 48.68	BNSF7103707	4XL	\$ 55.28	BNSF7103711
XL	\$ 48.68	BNSF7103708	5XL	\$ 57.48	BNSF7103712
			6XL	\$ 59.68	BNSF7103713



### CLASS III 100% POLYESTER LONG SLEEVE HOODED SWEATSHIRT WITH SEGMENTED REFLECTIVE TAPE

ANSI / ISEA (107-2004) ANSI CLASS III 100% POLYESTER LONG SLEEVE HOODED SWEATSHIRT; ORANGE; WITH SEGMENTED REFLECTIVE TRIM; NFPA 701 \*

SIZE	COST EA	SPTX PART #	SIZE	COST EA	SPTX PART #
S	\$ 54.75	BNSF7153705	2XL	\$ 57.17	BNSF7153709
M	\$ 54.75	BNSF7153706	3XL	\$ 59.59	BNSF7153710
L	\$ 54.75	BNSF7153707	4XL	\$ 62.01	BNSF7153711
XL	\$ 54.75	BNSF7153708	5XL	\$ 64.43	BNSF7153712
			6XL	\$ 66.85	BNSF7153713



## // LIGHT OUTERWEAR



### CLASS II 100% POLYESTER LONG SLEEVE FULL ZIPPER HOODED SWEATSHIRT WITH SEGMENTED REFLECTIVE TAPE

ANSI / ISEA (107-2004) ANSI CLASS II 100% POLYESTER LONG SLEEVE FULL ZIPPER HOODED SWEATSHIRT; ORANGE; WITH SEGMENTED REFLECTIVE TRIM; NFPA 701 \*

SIZE	COST EA	SPTX PART #	SIZE	COST EA	SPTX PART #
S	\$ 52.53	BNSF7903705	2XL	\$ 54.73	BNSF7903709
M	\$ 52.53	BNSF7903706	3XL	\$ 56.93	BNSF7903710
L	\$ 52.53	BNSF7903707	4XL	\$ 59.13	BNSF7903711
XL	\$ 52.53	BNSF7903708	5XL	\$ 61.33	BNSF7903712
			6XL	\$ 63.53	BNSF7903713



### CLASS III 100% POLYESTER LONG SLEEVE FULL ZIPPER HOODED SWEATSHIRT WITH SEGMENTED REFLECTIVE TAPE

ANSI / ISEA (107-2004) ANSI CLASS III 100% POLYESTER LONG SLEEVE FULL ZIPPER HOODED SWEATSHIRT; ORANGE; WITH SEGMENTED REFLECTIVE TRIM; NFPA 701 \*

SIZE	COST EA	SPTX PART #	SIZE	COST EA	SPTX PART #
S	\$ 58.06	BNSF7953705	2XL	\$ 61.44	BNSF7953709
M	\$ 58.06	BNSF7953706	3XL	\$ 63.62	BNSF7953710
L	\$ 58.06	BNSF7953707	4XL	\$ 65.80	BNSF7953711
XL	\$ 58.06	BNSF7953708	5XL	\$ 67.98	BNSF7953712
			6XL	\$ 70.16	BNSF7953713



### CLASS III 100% POLYESTER LONG SLEEVE HEAVY WEIGHT FULL ZIPPER HOODED SWEATSHIRT WITH HOOD REFLECTIVE

ANSI / ISEA (107-2004) ANSI CLASS III 100% POLYESTER LONG SLEEVE HEAVY WEIGHT FULL ZIPPER HOODED SWEATSHIRT; ORANGE; WITH HOOD REFLECTIVE; NFPA 701 \*

SIZE	COST EA	SPTX PART #	SIZE	COST EA	SPTX PART #
S	\$ 68.25	BNSF7993705	2XL	\$ 75.55	BNSF7993709
M	\$ 68.25	BNSF7993706	3XL	\$ 75.75	BNSF7993710
L	\$ 68.25	BNSF7993707	4XL	\$ 78.55	BNSF7993711
XL	\$ 68.25	BNSF7993708	5XL	\$ N/A	BNSF7993712
			6XL	\$ N/A	BNSF7993713



### ANSI CLASS III ALL-FABRIC HEAVYWEIGHT LINED WINDSHIRT WITH SIDE SLASH POCKETS

ANSI / ISEA (107-2004) ANSI CLASS III ALL-FABRIC BODY, NFPA 701; HEAVYWEIGHT LINED WINDSHIRT WITH RIB KNIT COLLAR, CUFFS & WAISTBAND AND SIDE SLASH POCKETS; ORANGE; NFPA 701 \*

SIZE	COST EA	SPTX PART #	SIZE	COST EA	SPTX PART #	SIZE	COST EA	SPTX PART #
S	\$ 82.50	BNSF9373705	2XL	\$ 88.00	BNSF9373709	LG TALL	\$ 88.00	BNSF9373714
M	\$ 82.50	BNSF9373706	3XL	\$ 93.50	BNSF9373710	XL TALL	\$ 88.00	BNSF9373715
L	\$ 82.50	BNSF9373707	4XL	\$ 104.50	BNSF9373711	2XL TALL	\$ 93.50	BNSF9373716
XL	\$ 82.50	BNSF9373708	5XL	\$ 115.50	BNSF9373712	3XL TALL	\$ 104.50	BNSF9373717
			6XL	\$ 121.00	BNSF9373713	4XL TALL	\$ 115.50	BNSF9373718
						5XL TALL	\$ 121.00	BNSF9373719
						6XL TALL	\$ 126.50	BNSF9373720



# HIGH VISIBILITY

## // LIGHT OUTERWEAR



### CLASS III ECONOMY WINDBREAKER JACKET

ANSI / ISEA (107-2004) ANSI CLASS III WINDBREAKER JACKET; COTTON LINING; SNAP CLOSURE; ORANGE

SIZE	COST EA	SPTX PART #	SIZE	COST EA	SPTX PART #
S	\$ 46.48	BNSF9503705	2XL	\$ 48.68	BNSF9503709
M	\$ 46.48	BNSF9503706	3XL	\$ 49.78	BNSF9503710
L	\$ 46.48	BNSF9503707	4XL	\$ 50.88	BNSF9503711
XL	\$ 46.48	BNSF9503708	5XL	\$ 51.98	BNSF9503712
			6XL	\$ 53.08	BNSF9503713

## // JACKETS



### CLASS III FLEECE LINED JACKET

ANSI / ISEA (107-2004) ANSI CLASS III FLEECE LINED JACKET; 100 WEIGHT POLAR FLEECE LINING; ORANGE

SIZE	COST EA	SPTX PART #	SIZE	COST EA	SPTX PART #	SIZE	COST EA	SPTX PART #
S	\$ 141.08	BNSF9303705	2XL	\$ 148.13	BNSF9303709	LG TALL	\$ 148.13	BNSF9303714
M	\$ 141.08	BNSF9303706	3XL	\$ 154.28	BNSF9303710	XL TALL	\$ 148.13	BNSF9303715
L	\$ 141.08	BNSF9303707	4XL	\$ 158.68	BNSF9303711	2XL TALL	\$ 154.28	BNSF9303716
XL	\$ 141.08	BNSF9303708	5XL	\$ 167.48	BNSF9303712	3XL TALL	\$ 158.68	BNSF9303717
			6XL	\$ 176.28	BNSF9303713	4XL TALL	\$ 167.48	BNSF9303718
						5XL TALL	\$ 176.28	BNSF9303719
						6XL TALL	\$ 185.09	BNSF9303720



### CLASS II REVERSIBLE JACKET ORANGE / BLACK SHELL / BLACK POLAR FLEECE LINER AND 3M REFLECTIVE TAPE

ANSI / ISEA (107-2004) ANSI CLASS II REVERSIBLE JACKET; ORANGE / BLACK SHELL; BLACK POLAR FLEECE LINER; 3M REFLECTIVE TAPE; ZIPPER CLOSURE: NFPA 701

SIZE	COST EA	SPTX PART #	SIZE	COST EA	SPTX PART #
S	\$ 145.20	BNSF9593705	2XL	\$ 150.04	BNSF9593709
M	\$ 145.20	BNSF9593706	3XL	\$ 154.88	BNSF9593710
L	\$ 145.20	BNSF9593707	4XL	\$ 159.72	BNSF9593711
XL	\$ 145.20	BNSF9593708	5XL	\$ 164.56	BNSF9593712



### CLASS III 4-IN-1 HEAVY FLEECE LINED JACKET

ANSI / ISEA (107-2004) ANSI CLASS III 4 IN 1 HEAVY FLEECE LINED JACKET; ZIP-OUT LINER; REMOVABLE SLEEVES; ORANGE

SIZE	COST EA	SPTX PART #	SIZE	COST EA	SPTX PART #
S	\$ 165.00	BNSF9353705	2XL	\$ 175.00	BNSF9353709
M	\$ 165.00	BNSF9353706	3XL	\$ 185.00	BNSF9353710
L	\$ 165.00	BNSF9353707	4XL	\$ 195.00	BNSF9353711
XL	\$ 165.00	BNSF9353708	5XL	\$ 205.00	BNSF9353712
			5XL	\$ 215.00	BNSF9353713



**CLASS III 5 IN 1 HEAVY QUILTED LINED JACKET / COAT AND BODYWARMER**  
ANSI / ISEA (107-2004) ANSI CLASS III 5 IN 1 HEAVY FLEECE LINED JACKET / COAT AND BODYWARMER

SIZE	COST EA	SPTX PART #	SIZE	COST EA	SPTX PART #
S	\$ 265.75	BNSF9553705	2XL	\$ 278.55	BNSF9553709
M	\$ 265.75	BNSF9553706	3XL	\$ 289.25	BNSF9553710
L	\$ 265.75	BNSF9553707	4XL	\$ 299.50	BNSF9553711
XL	\$ 265.75	BNSF9553708	5XL	\$ 310.50	BNSF9553712
			6XL	\$ 320.50	BNSF9553713



**CLASS III 3-IN-1 HEAVY FLEECE LINED JACKET**  
ANSI / ISEA (107-2004) ANSI CLASS III 3-IN1 HEAVY FLEECE LINED JACKET; ORANGE

SIZE	COST EA	SPTX PART #	SIZE	COST EA	SPTX PART #
S	\$ 165.00	BNSF9363705	2XL	\$ 175.00	BNSF9363709
M	\$ 165.00	BNSF9363706	3XL	\$ 185.00	BNSF9363710
L	\$ 165.00	BNSF9363707	4XL	\$ 195.00	BNSF9363711
XL	\$ 165.00	BNSF9363708	5XL	\$ 205.00	BNSF9363712
			6XL	\$ 215.00	BNSF9363713

**// RAIN GEAR**



**CLASS III GENERAL USE RAIN SUIT - JACKET & BIBS SET**  
ANSI / ISEA (107-2004) ANSI CLASS III GENERAL USE RAIN SUIT; JACKET & BIBS; ORANGE; NFPA 701 \* : ASTM F1506

SIZE	COST EA	SPTX PART #	SIZE	COST EA	SPTX PART #
S	\$ 149.60	BNSF9703705	2XL	\$ 155.10	BNSF9703709
M	\$ 149.60	BNSF9703706	3XL	\$ 159.50	BNSF9703710
L	\$ 149.60	BNSF9703707	4XL	\$ 162.80	BNSF9703711
XL	\$ 149.60	BNSF9703708	5XL	\$ 166.10	BNSF9703712
			6XL	\$ 168.30	BNSF9703713



**CLASS III GENERAL USE RAIN SUIT - JACKET & PANTS SET**  
ANSI / ISEA (107-2004) ANSI CLASS III GENERAL USE RAIN SUIT; JACKET & PANTS; ORANGE; NFPA 701 \* : ASTM F1506

SIZE	COST EA	SPTX PART #	SIZE	COST EA	SPTX PART #
S	\$ 161.60	BNSF9793705	2XL	\$ 167.10	BNSF9793709
M	\$ 161.60	BNSF9793706	3XL	\$ 171.50	BNSF9793710
L	\$ 161.60	BNSF9793707	4XL	\$ 174.80	BNSF9793711
XL	\$ 161.60	BNSF9793708	5XL	\$ 178.10	BNSF9793712
			6XL	\$ 180.30	BNSF9793713

# HIGH VISIBILITY

## // RAIN GEAR



### CLASS III RAIN JACKET - SEPARATES

ANSI / ISEA (107-2004) ANSI CLASS III GENERAL USE RAIN JACKET; ORANGE; NFPA 701 \* : ASTM F1506

SIZE	COST EA	SPTX PART #	SIZE	COST EA	SPTX PART #
S	\$ 89.76	BNSF9713705	2XL	\$ 93.06	BNSF9713709
M	\$ 89.76	BNSF9713706	3XL	\$ 95.70	BNSF9713710
L	\$ 89.76	BNSF9713707	4XL	\$ 97.68	BNSF9713711
XL	\$ 89.76	BNSF9713708	5XL	\$ 99.66	BNSF9713712
			6XL	\$ 100.98	BNSF9713713



### CLASS E RAIN BIBS - SEPARATES

ANSI / ISEA (107-2004) ANSI CLASS E GENERAL USE RAIN BIBS; ORANGE; NFPA 701 \* : ASTM F1506

SIZE	COST EA	SPTX PART #	SIZE	COST EA	SPTX PART #
S	\$ 59.84	BNSF9733705	2XL	\$ 62.04	BNSF9733709
M	\$ 59.84	BNSF9733706	3XL	\$ 63.84	BNSF9733710
L	\$ 59.84	BNSF9733707	4XL	\$ 65.12	BNSF9733711
XL	\$ 59.84	BNSF9733708	5XL	\$ 66.44	BNSF9733712
			6XL	\$ 67.32	BNSF9733713



### CLASS E RAIN PANTS - SEPARATES

ANSI / ISEA (107-2004) ANSI CLASS E GENERAL USE RAIN PANTS; ORANGE; NFPA 701 \* : ASTM F1506

SIZE	COST EA	SPTX PART #	SIZE	COST EA	SPTX PART #
S	\$ 71.45	BNSF9753705	2XL	\$ 74.89	BNSF9753709
M	\$ 71.45	BNSF9753706	3XL	\$ 76.13	BNSF9753710
L	\$ 71.45	BNSF9753707	4XL	\$ 78.46	BNSF9753711
XL	\$ 71.45	BNSF9753708	5XL	\$ 80.14	BNSF9753712
			6XL	\$ 83.24	BNSF9753713



### CLASS III CALF LENGTH LONG RAIN COAT - SEPARATES

ANSI / ISEA (107-2004) ANSI CLASS III CALF LENGTH GENERAL USE LONG RAIN COAT; ORANGE; NFPA 701 \*

SIZE	COST EA	SPTX PART #	SIZE	COST EA	SPTX PART #
S	\$ 104.25	BNSF9723705	2XL	\$ 108.25	BNSF9723709
M	\$ 104.25	BNSF9723706	3XL	\$ 111.75	BNSF9723710
L	\$ 104.25	BNSF9723707	4XL	\$ 115.95	BNSF9723711
XL	\$ 104.25	BNSF9723708	5XL	\$ 118.55	BNSF9723712
			6XL	\$ 121.25	BNSF9723713





## // RAIN GEAR



### CLASS III GENERAL DUTY RAIN SUIT - JACKET & BIBS SET

ANSI / ISEA (107-2004) ANSI CLASS III GENERAL DUTY RAIN SUIT; JACKET & BIBS; ORANGE / BLACK; NFPA 701 \*

SIZE	COST EA	SPTX PART #	SIZE	COST EA	SPTX PART #
S	\$ 104.40	BNSF9803705	2XL	\$ 112.00	BNSF9803709
M	\$ 104.40	BNSF9803706	3XL	\$ 116.75	BNSF9803710
L	\$ 104.40	BNSF9803707	4XL	\$ 128.90	BNSF9803711
XL	\$ 104.40	BNSF9803708			



### CLASS III GENERAL DUTY RAIN JACKET - SEPARATES

ANSI / ISEA (107-2004) ANSI CLASS III GENERAL DUTY RAIN JACKET; ORANGE / BLACK; NFPA 701 \*

SIZE	COST EA	SPTX PART #	SIZE	COST EA	SPTX PART #
S	\$ 69.95	BNSF9813705	2XL	\$ 73.95	BNSF9813709
M	\$ 69.95	BNSF9813706	3XL	\$ 5.95	BNSF9813710
L	\$ 69.95	BNSF9813707	4XL	\$ 78.95	BNSF9813711
XL	\$ 69.95	BNSF9813708	5XL	\$ 81.95	BNSF9813712



### CLASS E GENERAL DUTY RAIN BIBS - SEPARATES

ANSI / ISEA (107-2004) ANSI CLASS E GENERAL DUTY RAIN BIBS; ORANGE / BLACK; NFPA 701 \*

SIZE	COST EA	SPTX PART #	SIZE	COST EA	SPTX PART #
S	\$ 39.95	BNSF9833705	2XL	\$ 43.95	BNSF9833709
M	\$ 39.95	BNSF9833706	3XL	\$ 46.95	BNSF9833710
L	\$ 39.95	BNSF9833707	4XL	\$ 49.95	BNSF9833711
XL	\$ 39.95	BNSF9833708			



### CLASS E GENERAL DUTY RAIN PANTS - SEPARATES

ANSI / ISEA (107-2004) ANSI CLASS E GENERAL DUTY RAIN PANTS; ORANGE / BLACK; NFPA 701 \*

SIZE	COST EA	SPTX PART #	SIZE	COST EA	SPTX PART #
S	\$ 42.95	BNSF9853705	2XL	\$ 46.95	BNSF9853709
M	\$ 42.95	BNSF9853706	3XL	\$ 49.95	BNSF9853710
L	\$ 42.95	BNSF9853707	4XL	\$ 52.95	BNSF9853711
XL	\$ 42.95	BNSF9853708			

# HIGH VISIBILITY

## // PANTS



### CLASS III GENERAL DUTY RAIN SUIT - JACKET & PANTS SET

ANSI CLASS III GENERAL DUTY RAIN SUIT; JACKET & PANTS; ORANGE / BLACK; NFPA 701 \*

SIZE	COST EA	SPTX PART #	SIZE	COST EA	SPTX PART #
S	\$ 107.25	BNSF9893705	2XL	\$ 114.85	BNSF9893709
M	\$ 107.25	BNSF9893706	3XL	119.60	BNSF9893710
L	\$ 107.25	BNSF9893707	4XL	\$ 125.30	BNSF9893711
XL	\$ 107.25	BNSF9893708			



### CLASS E ALL-FABRIC PANTS

(Wearer meets ANSI CLASS III Standards when worn with CLASS II Upper Garment)

ANSI / ISEA (107-2004) ANSI CLASS E HIGH VISIBILITY PANTS; ALL-FABRIC, NFPA 701 \*

SIZE	COST EA	SPTX PART #	SIZE	COST EA	SPTX PART #
S	\$ 33.83	BNSF1953705	2XL	\$ 36.03	BNSF1953709
M	\$ 33.83	BNSF1953706	3XL	\$ 38.23	BNSF1953710
L	\$ 33.83	BNSF1953707	4XL	\$ 36.75	BNSF1953711
XL	\$ 33.83	BNSF1953708	5XL	\$ 38.75	BNSF1953712
			6XL	\$ 40.75	BNSF1953713



### CLASS E ALL-MESH PANTS

(Wearer meets ANSI CLASS III Standards when worn with CLASS II Upper Garment)

ANSI / ISEA (107-2004) ANSI CLASS E HIGH VISIBILITY PANTS; ALL-MESH, NFPA 701 \*

SIZE	COST EA	SPTX PART #	SIZE	COST EA	SPTX PART #
S	\$ 33.83	BNSF1903705	2XL	\$ 36.03	BNSF1903709
M	\$ 33.83	BNSF1903706	3XL	\$ 38.23	BNSF1903710
L	\$ 33.83	BNSF1903707	4XL	\$ 36.75	BNSF1903711
XL	\$ 33.83	BNSF1903708	5XL	\$ 38.75	BNSF1903712
			6XL	\$ 40.75	BNSF1903713

## // HEADWEAR



### CLASS E 200 GRAM POLAR FLEECE HI VIS BEANIE WITH 3M SCOTCHLITE RETROREFLECTIVE STRETCHABLE TAPING

ANSI / ISEA (107-2004) CLASS E 200 GRAM POLAR FLEECE HI VIS BEANIE WITH 3M SCOTCHLITE RETROREFLECTIVE STRETCHABLE TAPING; ORANGE

SIZE	COST EA	SPTX PART #
OSFM	\$ 15.95	BNSFA2163600



### ANSI 200 GRAM POLAR FLEECE 2 IN 1 HI VIS BEANIE WITH EAR MUFF AND FACE SHIELD

ANSI / ISEA (107-2004) ANSI 200 GRAM POLAR FLEECE 2 IN 1 HI VIS BEANIE WITH EAR MUFFS AND FACE SHIELD; ORANGE

SIZE	COST EA	SPTX PART #
OSFM	\$ 17.75	BNSFA2333600



## // HEADWEAR

**NEW  
ITEM**



**KNIT NECK GATOR**  
COVERS NOSE, MOUTH, EARS AND NECK.  
DOUBLE LAYER ACRYLIC KNIT. BLACK

SIZE	COST EA	SPTX PART #
OSFM	\$ 9.25	BNSF00503600

**NEW  
ITEM**



**FLEECE NECK GATOR**  
DOUBLE LAYER FLEECE FOR ADDED WARMTH. PROTECTS NOSE, MOUTH, EARS AND NECK. PREVENTS DRAFTS FROM CREEPING IN. ADJUSTABLE DRAW CORD FOR SNUG FIT

SIZE	COST EA	SPTX PART #
OSFM	\$ 11.75	BNSF00643600

**NEW  
ITEM**



**FULL FACE TUBE LINER**  
FITS SNUGLY OVER MOST REGULAR BRIM HARD HATS

SIZE	COST EA	SPTX PART #
OSFM	\$ 11.75	SPTXA2803600

**NEW  
ITEM**



**POLAR FLEECE BALACLAVA HOOD MASK**  
ANSI 200 GRAM POLAR FLEECE 100% POLYESTER HI VIS BALACLAVA; ADJUSTABLE FACE SHEILD;

SIZE	COST EA	SPTX PART #
OSFM	\$ 17.75	BNSFA2353600

**NEW  
ITEM**



**FULL FACE TUBE LINER**  
FITS SNUGLY OVER MOST REGULAR BRIM HARD HATS

SIZE	COST EA	SPTX PART #
OSFM	\$ 11.75	BNSFLK8103600

**NEW  
ITEM**



**LINER BEANIE CAP**  
FITS SNUGLY OVER MOST REGULAR BRIM HARD HATS

SIZE	COST EA	SPTX PART #
OSFM	\$ 13.95	BNSF10753600

**NEW  
ITEM**



**3-IN-1 FLEECE BALACLAVA**  
ADJUSTABLE DESIGN 100% POLYESTER PLUSH FLEECE. DRAWSTRING FOR SNUG FIT

SIZE	COST EA	SPTX PART #
OSFM	\$ 18.75	BNSF10703600

**NEW  
ITEM**



**FLEECE BALACLAVA WITH FACE PANEL**  
ADJUSTABLE DESIGN 100% POLYESTER PLUSH FLEECE. DRAWSTRING FOR SNUG FIT

SIZE	COST EA	SPTX PART #
OSFM	\$ 18.75	BNSF10803600



**POLAR FLEECE HEADBAND WITH EAR MUFF**  
SPORTEX 95% POLYESTER 5% SPANDEX POLAR FLEECE HEADBAND WITH EAR MUFF

SIZE	COST EA	SPTX PART #
OSFM	\$ 8.95	BNSFA2503600



**POLAR FLEECE HEADBAND WITH EAR MUFF - BLACK**  
SPORTEX 95% POLYESTER 5% SPANDEX POLAR FLEECE HEADBAND WITH EAR MUFF

SIZE	COST EA	SPTX PART #
OSFM	\$ 8.95	BNSFA2503600



# HIGH VISIBILITY

## // HEADWEAR

**NEW ITEM**



**CLASSIC HARD HAT TUBE LINER**  
 FITS SNUGLY OVER MOST REGULAR BRIM HARD HATS

SIZE	COST EA	SPTX PART #
OSFM	\$ 11.95	BNSFRK8003600

**NEW ITEM**



**BNSF HARD HAT SHADES**  
 ANSI / ISEA (107-2004) ANSI CLASS E HARD HAT SUN SHADES, NFPA 701 \*

SIZE	COST EA	SPTX PART #
OSFM	\$ 11.95	BNSF1333600

## // ACCESSORIES



**2-LITER HI VIS HYDRATION PACK**  
 ANSI / ISEA (107-2004) 2-LITER HI VIS HYDRATION PACK; ORANGE WITH 3M REFLECTIVE; QUICK RELEASE SHOULDER STRAPS & EXTERNAL POCKET; OSFM

SIZE	COST EA	SPTX PART #
OSFM	\$ 59.95	BNSF1123600



**2-LITER BASIC HYDRATION PACK**  
 2-LITER BASIC HYDRATION PACK; BLACK; QUICK RELEASE SHOULDER STRAPS & EXTERNAL POCKET; OSFM

SIZE	COST EA	SPTX PART #
OSFM	\$ 47.95	BNSF1143600



**3-LITER PREMIUM HYDRATION PACK**  
 3-LITER PREMIUM HYDRATION PACK; BLACK; QUICK RELEASE SHOULDER STRAPS & EXTERNAL POCKET; OSFM

SIZE	COST EA	SPTX PART #
OSFM	\$ 65.95	BNSF1163600



**CLASS E BNSF BACKPACKCOVER**  
 HI-VISIBILITY; ORANGE AND LIME

SIZE	COST EA	SPTX PART #
OS	\$ 36.30	BNSF1203600



**16" BNSF ORANGE STEERING WHEEL COVER**  
 STEERING WHEEL COVER; ORANGE

SIZE	COST EA	SPTX PART #
16"	\$ 36.30	BNSF1353600



**23" BNSF ORANGE STEERING WHEEL COVER**  
 STEERING WHEEL COVER; ORANGE

SIZE	COST EA	SPTX PART #
23"	\$ 39.30	BNSF1373600



## // ACCESSORIES

**NEW  
ITEM**



**23" TRAFFIC CONE**  
SPORTEX SAFETY NCHRP 350 CATEGORY 1 ORANGE HEAVY DUTY STABLE WIDE BODY BOTTOM & NARROW WIND RESISTANT PROFILE ASTM D 4956-04 TYPE 3 - 3 M REFLECTIVE TAPING. IMPRINTED LOGO ON BOTH SIDES.

SIZE	COST EA	SPTX PART #
28"	\$ 18.25	BNSFTC183600

**NEW  
ITEM**



**28" BNSF ORANGE STEERING WHEEL COVER**  
SPORTEX SAFETY NCHRP 350 CATEGORY 1 ORANGE HEAVY DUTY STABLE WIDE BODY BOTTOM & NARROW WIND RESISTANT PROFILE ASTM D 4956-04 TYPE 3 - 3M REFLECTIVE TAPING. IMPRINTED LOGO ON BOTH SIDES.

SIZE	COST EA	SPTX PART #
28"	\$ 27.75	BNSFTC283600



**ANSI COMPLIANT HI-VISIBILITY UTILITY FLOTATION VEST**  
ORANGE POLYESTER / NYLON OXFORD UTILITY FLOTATION VEST - USCG TYPE III / 15.5 LBS BUOYANCY AND SOLAS GRADE YELLOW REFLECTIVE PANELS

SIZE	COST EA	SPTX PART #
S	\$ 134.95	BNSF1253705
M	\$ 134.95	BNSF1253706
L	\$ 134.95	BNSF1253707
XL	\$ 134.95	BNSF1253708
2X	\$ 139.95	BNSF1253709
3X	\$ 144.95	BNSF1253710



**SAFE DECISION BRACELETS**  
SILICONE IMPRESSED LOGO AND PHRASE; ORANGE

QUANTITY	COST EA	SPTX PART #
12 - 23	\$ 1.49	BNSF1403600
24 - 47	\$ 1.29	BNSF1403600
48 - 71	\$ 1.19	BNSF1403600
72+	\$ 0.95	BNSF1403600



**TEMP CONTROL COOLING VEST**  
SPORTEX SAFETY 4-6 HOUR FR TEMP CONTROL COOLING VEST WITH REMOVABLE ICE PACK / KHAKI

SIZE	COST EA	SPTX PART #
S/M	\$ 235.50	BNSF12767S/M
L/XL	\$ 280.50	BNSF12767L/XL

**NEW  
ITEM**



**PREMIUM E-COOLING VEST**  
SPORTEX SAFETY PREMIUM E-COOLING HI TECH FLEECECORE / QUICK DRY FABRIC VEST. ACTIVATES WITH 30 SECONDS OF WATER SUBMERSION. NO WETNESS OR DROP FORMATION. 6 POUNDS CHARGED. PROVIDES 7 -3XL HOURS OF EVAPORATIVE COOLING.

SIZE	COST EA	SPTX PART #
M	\$ 275.00	BNSF1293206
L	\$ 275.00	BNSF1293207
XL	\$ 275.00	BNSF1293208
2X	\$ 285.00	BNSF1293209
3X	\$ 295.00	BNSF1293210

**NEW  
ITEM**



**GENERAL DUTY EXOTHERM COOLING VEST**  
SPORTEX SAFETY GENERAL DUTY W/ REMOVABLE 4 - 6 HOUR CHARGE EXOTHERM COOLING PACKS COMFORTABLE & BREATHABLE ANTI MICROBIAL NYLON / POLY SHELL - WEIGHT IS 6.5 POUNDS - ADJUSTABLE MID SECTION & SHOULDERS

SIZE	COST EA	SPTX PART #
M/L	\$ 195.00	BNSF12632M/L
L/XL	\$ 210.00	BNSF12632L/XL
XL/2XL	\$ 220.00	BNSF12632XL/2XL



**PPE DUFFLE BAG**  
600 DENIER POLYESTER DOUBLE ZIPPERED, MULTI POCKETS, WEB HANDLES AND METAL HARDWARE

SIZE	COST EA	SPTX PART #
30"	\$ 23.25	BNSF7984003600

# FLAME RESISTANT



## WORKWEAR

### FR DETAILS

Workers in the utility, oil, gas, petrochemical, and steel industries work in environments that expose them to high risk hazards that can cause severe and fatal burn injuries. The use of flame resistant clothing in recent studies and surveys has been proven to provide thermal protection against electric arcs, flash fire and molten metal splash exposure. The level of protection usually rests in the weight of the fabric and composition used in the manufacturing of these flame resistant garments.

Flame resistant garments will self extinguish when the source of ignition is removed thus limiting the body burn percentage. Flame resistant clothing will not melt or drip like synthetic fabrics. Non flame resistant fabrics will continue to burn until the fabric is completely consumed. This can cause severe burns to the wearer. It has been said that most severe and fatal burns are due to the individuals clothing igniting and continuing to burn, not the exposure itself.

The clothes in this catalog are designed for continuous wear as second layer protection. Primary protection is highly recommended for hot work activities.

At Sportex®, our goal is to make Westex Inc.® flame resistant workwear a partner you can count on to become your resource in high quality Flame Resistant workwear.

**WARNING:** These garments are not intended for fire entry or structural fire fighting activities and provide no personal protection from chemical exposures unless indicated. Remove garments at once if soiled with flammable material.

### WASHING INSTRUCTIONS

WASHING	DRYING	PRESSING
<ol style="list-style-type: none"> <li>1. Do not overload washer.</li> <li>2. Use high water level.</li> <li>3. wash at temperature necessary to clean garment (max 165°F, or 74°C).</li> <li>4. Use recommended amount of quality detergent.</li> <li>5. Do not use chlorine bleach or hydrogen peroxide either separately or in detergents.</li> <li>6. Do not use softeners or starch.</li> <li>7. Do not use tallow soap.</li> <li>8. When industrial laundering use acid sour.</li> <li>9. Softened water provides best results.</li> </ol>	<ol style="list-style-type: none"> <li>1. Do not use extreme heat or leave in for long periods (max stack temp 165°F, or 74° c).</li> <li>2. The basket temp should not exceed 280°F, or 74°C.</li> <li>3. Remove garment immediately when dry or slightly damp. Complete drying on a hanger. Overdrying will result in excessive shrinkage.</li> <li>4. Garments may be line dried</li> </ol>	<ol style="list-style-type: none"> <li>1. Garments may be pressed to remove wrinkles</li> <li>2. Use cotton setting.</li> </ol>

### SIZING CHART

VEST	S	M	L	XL	2XL	3XL	4X	5X	6X	ST	MT	LT	XLT	2XLT	3XLT	4XLT	5XLT	6XLT	
CHEST	46	48	50	52	56	60	64	68	72	46	48	50	52	56	60	64	68	72	
LENGTH	27	27	28	28	29	30	31	32	32	30	30	31	31	32	33	34	35	35	
<b>WELDING JACKET</b>																			
CHEST	42	46	50	54	58	62	66	70		42	46	50	54	58	62	66	70		
LENGTH	29	31	31	31	35	37	39	39		21	24	24	24	28	40	42	42		
SLEEVE LENGTH	33	34	36	38	40	42	43	44		33	34	36	38	40	42	43	44		
<b>OVERALL &amp; BIBS // OVERALL</b>										<b>// BIBS</b>									
CHEST	42	44	46	50	54	58	62	66											
SLEEVE LENGTH	33	34	35	36	37	38	39	40											
INSEAM	28	29	30	31	31	32	32	33		28	29	30	31	31	32	32			
WAIST	30	32	34	38	42	46	50			34	38	42	46	50	54	58			



# FLAME RESISTANT

## // VESTS



### CLASS II 7OZ. LIGHT WEIGHT INDURA ULTRA SOFT FR HOT WORK & ELECTRICAL RATED SAFETY VESTS ZIP CLOSURE

CLASS II 7OZ. LIGHT WEIGHT INDURA ULTRA SOFT FR HOT WORK & ELECTRICAL RATED SAFETY VESTS ZIP CLOSURE; ASTM F1506 / NFPA-70E; ORANGE; ZIPPER CLOSURE

SIZE	COST EA	SPTX PART #	SIZE	COST EA	SPTX PART #	SIZE	COST EA	SPTX PART #
S	\$ 79.48	BNSF6173705	2XL	\$ 81.68	BNSF6173709	LG TALL	\$ 81.68	BNSF6173714
M	\$ 79.48	BNSF6173706	3XL	\$ 83.88	BNSF6173710	XL TALL	\$ 81.68	BNSF6173715
L	\$ 79.48	BNSF6173707	4XL	\$ 86.08	BNSF6173711	2XL TALL	\$ 83.88	BNSF6173716
XL	\$ 79.48	BNSF6173708	5XL	\$ 88.28	BNSF6173712	3XL TALL	\$ 86.08	BNSF6173717
			6XL	\$ 90.48	BNSF6173713	4XL TALL	\$ 88.28	BNSF6173718
						5XL TALL	\$ 90.48	BNSF6173719
						6XL TALL	\$ 92.68	BNSF6173720



### CLASS II 7OZ LIGHT WEIGHT INDURA ULTRA SOFT FR HOT WORK & ELECTRICAL RATED VESTS SNAP CLOSURE

ANSI STYLE CLASS II 7OZ LIGHT WEIGHT INDURA ULTRA SOFT FR HOTWORK & ELECTRICAL RATED VESTS; ASTM F1506 AND NFPA 70E; ORANGE; SNAP CLOSURE

SIZE	COST EA	SPTX PART #	SIZE	COST EA	SPTX PART #	SIZE	COST EA	SPTX PART #
S	\$ 87.42	BNSF6573705	2XL	\$ 89.84	BNSF6573709	LG TALL	\$ 89.84	BNSF6573714
M	\$ 87.42	BNSF6573706	3XL	\$ 92.26	BNSF6573710	XL TALL	\$ 89.84	BNSF6573715
L	\$ 87.42	BNSF6573707	4XL	\$ 94.68	BNSF6573711	2XL TALL	\$ 92.26	BNSF6573716
XL	\$ 87.42	BNSF6573708	5XL	\$ 97.10	BNSF6573712	3XL TALL	\$ 94.68	BNSF6573717
			6XL	\$ 99.52	BNSF6573713	4XL TALL	\$ 97.10	BNSF6573718
						5XL TALL	\$ 99.52	BNSF6573719
						6XL TALL	\$ 101.94	BNSF6573720



### CLASS II 7OZ LIGHT WEIGHT INDURA ULTRA SOFT FR HOT WORK & ELECTRICAL RATED VESTS ZIPPER CLOSURE WITH FALL PROTECTION

ANSI STYLE CLASS II 7OZ LIGHT WEIGHT INDURA ULTRA SOFT FR HOTWORK & ELECTRICAL RATED VESTS; ASTM F1506 AND NFPA 70E; ORANGE; ZIPPER CLOSURE

SIZE	COST EA	SPTX PART #	SIZE	COST EA	SPTX PART #	SIZE	COST EA	SPTX PART #
S	\$ 87.42	BNSF6173705FP	2XL	\$ 89.84	BNSF6173709FP	LG TALL	\$ 89.84	BNSF6173714FP
M	\$ 87.42	BNSF6173706FP	3XL	\$ 92.26	BNSF6173710FP	XL TALL	\$ 89.84	BNSF6173715FP
L	\$ 87.42	BNSF6173707FP	4XL	\$ 94.68	BNSF6173711FP	2XL TALL	\$ 92.26	BNSF6173716FP
XL	\$ 87.42	BNSF6173708FP	5XL	\$ 97.10	BNSF6173712FP	3XL TALL	\$ 94.68	BNSF6173717FP
			6XL	\$ 99.52	BNSF6173713FP	4XL TALL	\$ 97.10	BNSF6173718FP
						5XL TALL	\$ 99.52	BNSF6173719FP
						6XL TALL	\$ 101.94	BNSF6173720FP



### CLASS III 7OZ LIGHT WEIGHT INDURA ULTRA SOFT FR HOT WORK & ELECTRICAL RATED VESTS ZIPPER CLOSURE

ANSI STYLE CLASS III 7OZ LIGHT WEIGHT INDURA ULTRA SOFT FR HOTWORK & ELECTRICAL RATED VESTS; ASTM F1506 AND NFPA 70E; ORANGE; ZIPPER CLOSURE

SIZE	COST EA	SPTX PART #	SIZE	COST EA	SPTX PART #	SIZE	COST EA	SPTX PART #
S	\$ 85.53	BNSF6373705	2XL	\$ 87.73	BNSF6373709	LG TALL	\$ 87.73	BNSF6373714
M	\$ 85.53	BNSF6373706	3XL	\$ 89.93	BNSF6373710	XL TALL	\$ 87.73	BNSF6373715
L	\$ 85.53	BNSF6373707	4XL	\$ 92.13	BNSF6373711	2XL TALL	\$ 89.93	BNSF6373716
XL	\$ 85.53	BNSF6373708	5XL	\$ 94.33	BNSF6373712	3XL TALL	\$ 92.13	BNSF6373717
			6XL	\$ 96.53	BNSF6373713	4XL TALL	\$ 94.33	BNSF6373718
						5XL TALL	\$ 96.53	BNSF6373719
						6XL TALL	\$ 98.73	BNSF6373720

# FLAME RESISTANT

## // VESTS



### CLASS III 7OZ LIGHT WEIGHT INDURA ULTRA SOFT FR HOT WORK & ELECTRICAL RATED VESTS SNAP CLOSURE

ANSI STYLE CLASS III 7OZ LIGHT WEIGHT INDURA ULTRA SOFT FR HOTWORK & ELECTRICAL RATED VESTS; ASTM F1506 AND NFPA 70E; ORANGE; SNAP CLOSURE

SIZE	COST EA	SPTX PART #	SIZE	COST EA	SPTX PART #	SIZE	COST EA	SPTX PART #
S	\$ 94.08	BNSF6773705	2XL	\$ 96.50	BNSF6773709	LG TALL	\$ 96.50	BNSF6773714
M	\$ 94.08	BNSF6773706	3XL	\$ 98.92	BNSF6773710	XL TALL	\$ 96.50	BNSF6773715
L	\$ 94.08	BNSF6773707	4XL	\$ 101.34	BNSF6773711	2XL TALL	\$ 98.92	BNSF6773716
XL	\$ 94.08	BNSF6773708	5XL	\$ 103.76	BNSF6773712	3XL TALL	\$ 101.34	BNSF6773717
			6XL	\$ 106.18	BNSF6773713	4XL TALL	\$ 103.76	BNSF6773718
						5XL TALL	\$ 106.18	BNSF6773719
						6XL TALL	\$ 108.60	BNSF6773720



### CLASS III 7OZ LIGHT WEIGHT INDURA ULTRA SOFT FR HOT WORK & ELECTRICAL RATED VESTS ZIPPER CLOSURE WITH FALL PROTECTION

ANSI STYLE CLASS III 7OZ LIGHT WEIGHT INDURA ULTRA SOFT FR HOTWORK & ELECTRICAL RATED VESTS; ASTM F1506 AND NFPA 70E; ORANGE; ZIPPER CLOSURE; WITH FALL PROTECTION

SIZE	COST EA	SPTX PART #	SIZE	COST EA	SPTX PART #	SIZE	COST EA	SPTX PART #
S	\$ 94.08	BNSF6373705FP	2XL	\$ 96.50	BNSF6373709FP	LG TALL	\$ 96.50	BNSF6373714FP
M	\$ 94.08	BNSF6373706FP	3XL	\$ 98.92	BNSF6373710FP	XL TALL	\$ 96.50	BNSF6373715FP
L	\$ 94.08	BNSF6373707FP	4XL	\$ 101.34	BNSF6373711FP	2XL TALL	\$ 98.92	BNSF6373716FP
XL	\$ 94.08	BNSF6373708FP	5XL	\$ 103.76	BNSF6373712FP	3XL TALL	\$ 101.34	BNSF6373717FP
			6XL	\$ 106.18	BNSF6373713FP	4XL TALL	\$ 103.76	BNSF6373718FP
						5XL TALL	\$ 106.18	BNSF6373719FP
						6XL TALL	\$ 108.60	BNSF6373720FP



### CLASS II 7OZ LIGHT WEIGHT INDURA ULTRA SOFT FR HOT WORK & ELECTRICAL RATED 5-POINT TEAR-AWAY SAFETY VEST WITH ZIPPER

ANSI STYLE CLASS II 7OZ LIGHT WEIGHT INDURA ULTRA SOFT FR HOTWORK & ELECTRICAL RATED VESTS; ASTM F1506 AND NFPA 70E; ORANGE; 5-POINT TEAR-AWAY CLOSURE WITH ZIPPER

SIZE	COST EA	SPTX PART #	SIZE	COST EA	SPTX PART #	SIZE	COST EA	SPTX PART #
S	\$ 99.52	BNSF6723705	2XL	\$ 101.94	BNSF6723709	LG TALL	\$ 101.94	BNSF6723714
M	\$ 99.52	BNSF6723706	3XL	\$ 104.36	BNSF6723710	XL TALL	\$ 101.94	BNSF6723715
L	\$ 99.52	BNSF6723707	4XL	\$ 106.78	BNSF6723711	2XL TALL	\$ 104.36	BNSF6723716
XL	\$ 99.52	BNSF6723708	5XL	\$ 109.20	BNSF6723712	3XL TALL	\$ 106.78	BNSF6723717
			6XL	\$ 111.62	BNSF6723713	4XL TALL	\$ 109.20	BNSF6723718
						5XL TALL	\$ 111.62	BNSF6723719
						6XL TALL	\$ 114.04	BNSF6723720



### CLASS III 7OZ LIGHT WEIGHT INDURA ULTRA SOFT FR HOT WORK & ELECTRICAL RATED 5-POINT TEAR-AWAY SAFETY VEST WITH ZIPPER

ANSI STYLE CLASS III 7OZ LIGHT WEIGHT INDURA ULTRA SOFT FR HOTWORK & ELECTRICAL RATED VESTS; ASTM F1506 AND NFPA 70E; ORANGE; 5-POINT TEAR-AWAY CLOSURE WITH ZIPPER

SIZE	COST EA	SPTX PART #	SIZE	COST EA	SPTX PART #	SIZE	COST EA	SPTX PART #
S	\$ 107.99	BNSF6733705	2XL	\$ 110.41	BNSF6733709	LG TALL	\$ 110.41	BNSF6733714
M	\$ 107.99	BNSF6733706	3XL	\$ 112.83	BNSF6733710	XL TALL	\$ 110.41	BNSF6733715
L	\$ 107.99	BNSF6733707	4XL	\$ 115.25	BNSF6733711	2XL TALL	\$ 112.83	BNSF6733716
XL	\$ 107.99	BNSF6733708	5XL	\$ 117.67	BNSF6733712	3XL TALL	\$ 115.25	BNSF6733717
			6XL	\$ 120.09	BNSF6733713	4XL TALL	\$ 117.67	BNSF6733718
						5XL TALL	\$ 120.09	BNSF6733719
						6XL TALL	\$ 122.51	BNSF6733720



// VESTS



**CLASS II 9OZ MID-WEIGHT INDURA ULTRA SOFT FR HOT WORK & ELECTRICAL RATED VESTS  
ZIPPER CLOSURE**

ANSI STYLE CLASS II 9OZ MID-WEIGHT INDURA ULTRA SOFT FR HOTWORK & ELECTRICAL RATED VESTS; ASTM F1506 AND NFPA 70E;  
ORANGE; ZIPPER CLOSURE

SIZE	COST EA	SPTX PART #	SIZE	COST EA	SPTX PART #	SIZE	COST EA	SPTX PART #
S	\$ 79.48	BNSF6193705	2XL	\$ 81.68	BNSF6193709	LG TALL	\$ 81.68	BNSF6193714
M	\$ 79.48	BNSF6193706	3XL	\$ 83.88	BNSF6193710	XL TALL	\$ 81.68	BNSF6193715
L	\$ 79.48	BNSF6193707	4XL	\$ 86.08	BNSF6193711	2XL TALL	\$ 83.88	BNSF6193716
XL	\$ 79.48	BNSF6193708	5XL	\$ 88.28	BNSF6193712	3XL TALL	\$ 86.08	BNSF6193717
			6XL	\$ 90.48	BNSF6193713	4XL TALL	\$ 88.28	BNSF6193718
						5XL TALL	\$ 90.48	BNSF6193719
						6XL TALL	\$ 92.68	BNSF6193720



**CLASS II 9OZ MID-WEIGHT INDURA ULTRA SOFT FR HOT WORK & ELECTRICAL RATED VESTS  
SNAP CLOSURE**

ANSI STYLE CLASS II 9OZ MID-WEIGHT INDURA ULTRA SOFT FR HOTWORK & ELECTRICAL RATED VESTS; ASTM F1506 AND NFPA 70E;  
ORANGE; SNAP CLOSURE

SIZE	COST EA	SPTX PART #	SIZE	COST EA	SPTX PART #	SIZE	COST EA	SPTX PART #
S	\$ 87.42	BNSF6593705	2XL	\$ 89.84	BNSF6593709	LG TALL	\$ 89.84	BNSF6593714
M	\$ 87.42	BNSF6593706	3XL	\$ 92.26	BNSF6593710	XL TALL	\$ 89.84	BNSF6593715
L	\$ 87.42	BNSF6593707	4XL	\$ 94.68	BNSF6593711	2XL TALL	\$ 92.26	BNSF6593716
XL	\$ 87.42	BNSF6593708	5XL	\$ 97.10	BNSF6593712	3XL TALL	\$ 94.68	BNSF6593717
			6XL	\$ 99.52	BNSF6593713	4XL TALL	\$ 97.10	BNSF6593718
						5XL TALL	\$ 99.52	BNSF6593719
						6XL TALL	\$ 101.94	BNSF6593720



**CLASS II 9OZ MID-WEIGHT INDURA ULTRA SOFT FR HOT WORK & ELECTRICAL RATED VESTS  
ZIPPER CLOSURE WITH FALL PROTECTION**

ANSI STYLE CLASS II 9OZ MID-WEIGHT INDURA ULTRA SOFT FR HOTWORK & ELECTRICAL RATED VESTS; ASTM F1506 AND NFPA 70E;  
ORANGE; ZIPPER CLOSURE; WITH FALL PROTECTION

SIZE	COST EA	SPTX PART #	SIZE	COST EA	SPTX PART #	SIZE	COST EA	SPTX PART #
S	\$ 87.42	BNSF6193705FP	2XL	\$ 89.84	BNSF6193709FP	LG TALL	\$ 89.84	BNSF6193714FP
M	\$ 87.42	BNSF6193706FP	3XL	\$ 92.26	BNSF6193710FP	XL TALL	\$ 89.84	BNSF6193715FP
L	\$ 87.42	BNSF6193707FP	4XL	\$ 94.68	BNSF6193711FP	2XL TALL	\$ 92.26	BNSF6193716FP
XL	\$ 87.42	BNSF6193708FP	5XL	\$ 97.10	BNSF6193712FP	3XL TALL	\$ 94.68	BNSF6193717FP
			6XL	\$ 99.52	BNSF6193713FP	4XL TALL	\$ 97.10	BNSF6193718FP
						5XL TALL	\$ 99.52	BNSF6193719FP
						6XL TALL	\$ 101.94	BNSF6193720FP



**CLASS III 9OZ MID-WEIGHT INDURA ULTRA SOFT FR HOT WORK & ELECTRICAL RATED VESTS  
ZIPPER CLOSURE**

ANSI STYLE CLASS III 9OZ MID-WEIGHT INDURA ULTRA SOFT FR HOT WORK & ELECTRICAL RATED SAFETY VEST; ASTM F1506 AND NFPA 70E;  
ORANGE; ZIPPER CLOSURE

SIZE	COST EA	SPTX PART #	SIZE	COST EA	SPTX PART #	SIZE	COST EA	SPTX PART #
S	\$ 85.53	BNSF6393705	2XL	\$ 87.73	BNSF6393709	LG TALL	\$ 87.73	BNSF6393714
M	\$ 85.53	BNSF6393706	3XL	\$ 89.93	BNSF6393710	XL TALL	\$ 87.73	BNSF6393715
L	\$ 85.53	BNSF6393707	4XL	\$ 92.13	BNSF6393711	2XL TALL	\$ 89.93	BNSF6393716
XL	\$ 85.53	BNSF6393708	5XL	\$ 94.33	BNSF6393712	3XL TALL	\$ 92.13	BNSF6393717
			6XL	\$ 96.53	BNSF6393713	4XL TALL	\$ 94.33	BNSF6393718
						5XL TALL	\$ 96.53	BNSF6393719
						6XL TALL	\$ 98.73	BNSF6393720



# FLAME RESISTANT

## // VESTS



### CLASS III 9OZ MID-WEIGHT INDURA ULTRA SOFT FR HOT WORK & ELECTRICAL RATED VESTS SNAP CLOSURE

ANSI STYLE CLASS III 9OZ MID-WEIGHT INDURA ULTRA SOFT FR HOT WORK & ELECTRICAL RATED SAFETY VEST; ASTM F1506 AND NFPA 70E; ORANGE; SNAP CLOSURE

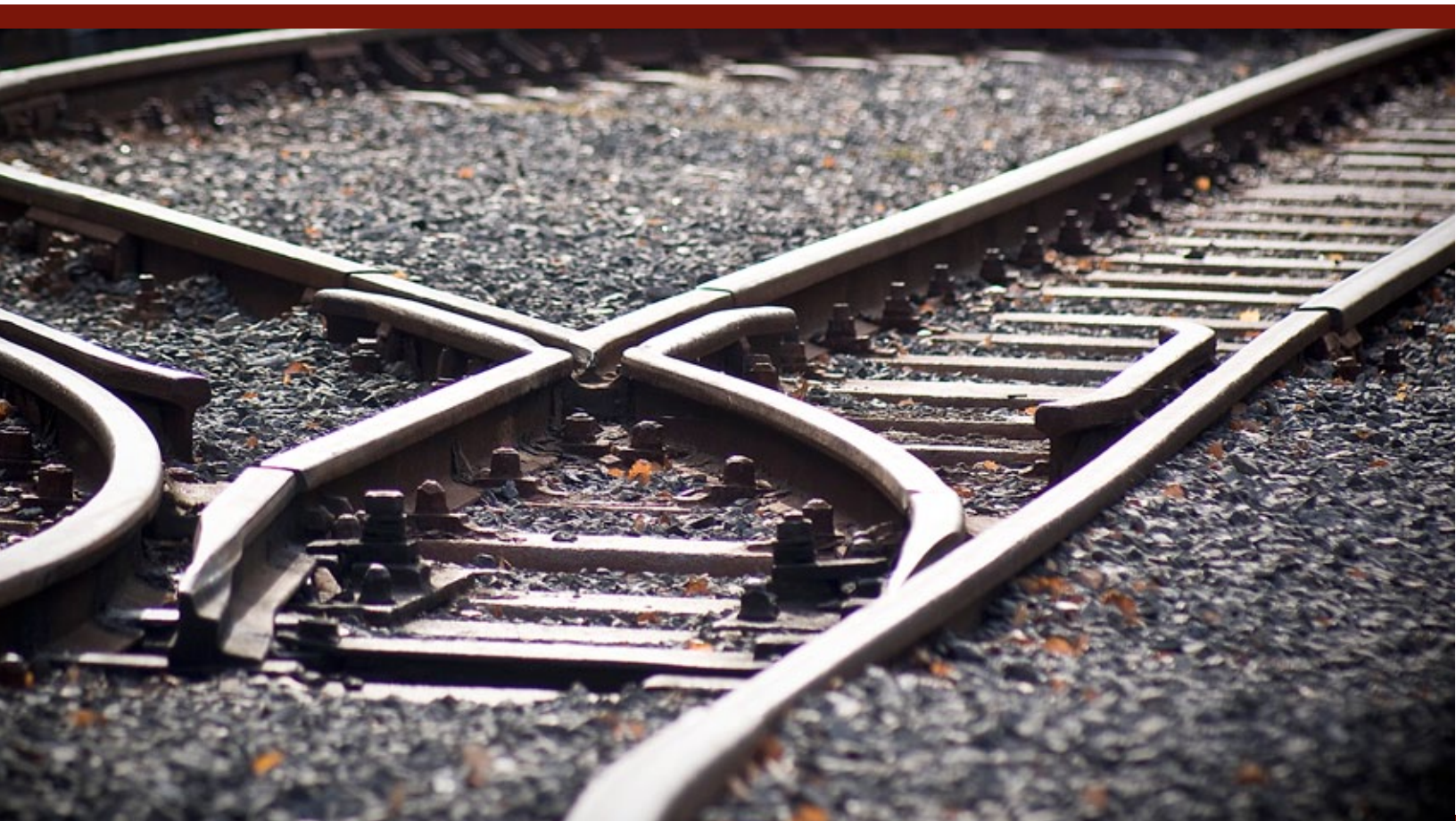
SIZE	COST EA	SPTX PART #	SIZE	COST EA	SPTX PART #	SIZE	COST EA	SPTX PART #
S	\$ 88.03	BNSF6993705	2XL	\$ 90.45	BNSF6993709	LG TALL	\$ 90.45	BNSF6993714
M	\$ 88.03	BNSF6993706	3XL	\$ 92.87	BNSF6993710	XL TALL	\$ 90.45	BNSF6993715
L	\$ 88.03	BNSF6993707	4XL	\$ 95.29	BNSF6993711	2XL TALL	\$ 92.87	BNSF6993716
XL	\$ 88.03	BNSF6993708	5XL	\$ 97.71	BNSF6993712	3XL TALL	\$ 95.29	BNSF6993717
			6XL	\$ 100.13	BNSF6993713	4XL TALL	\$ 97.71	BNSF6993718
						5XL TALL	\$ 100.13	BNSF6993719
						6XL TALL	\$ 102.55	BNSF6993720



### CLASS II 9OZ MID-WEIGHT INDURA ULTRA SOFT FR HOT WORK & ELECTRICAL RATED VESTS ZIPPER CLOSURE WITH FALL PROTECTION

ANSI STYLE CLASS II 9OZ MID-WEIGHT INDURA ULTRA SOFT FR HOTWORK & ELECTRICAL RATED VESTS; ASTM F1506 AND NFPA 70E; ORANGE; ZIPPER CLOSURE; WITH FALL PROTECTION

SIZE	COST EA	SPTX PART #	SIZE	COST EA	SPTX PART #	SIZE	COST EA	SPTX PART #
S	\$ 94.08	BNSF6393705FP	2XL	\$ 96.50	BNSF6393709FP	LG TALL	\$ 96.50	BNSF6393714FP
M	\$ 94.08	BNSF6393706FP	3XL	\$ 98.92	BNSF6393710FP	XL TALL	\$ 96.50	BNSF6393715FP
L	\$ 94.08	BNSF6393707FP	4XL	\$ 101.34	BNSF6393711FP	2XL TALL	\$ 98.92	BNSF6393716FP
XL	\$ 94.08	BNSF6393708FP	5XL	\$ 103.76	BNSF6393712FP	3XL TALL	\$ 101.34	BNSF6393717FP
			6XL	\$ 106.18	BNSF6393713FP	4XL TALL	\$ 103.76	BNSF6393718FP
						5XL TALL	\$ 106.18	BNSF6393719FP
						6XL TALL	\$ 108.60	BNSF6393720FP







// VESTS



**CLASS II 7OZ LIGHT WEIGHT INDURA ULTRA SOFT FR 10 POCKET SURVEYORS VEST**  
ANSI STYLE CLASS II 7OZ LIGHT WEIGHT INDURA ULTRA SOFT FR HOT WORK & ELECTRICAL RATED SAFETY VEST; ASTM F1506 AND NFPA 70E; ORANGE; ZIPPER CLOSURE

SIZE	COST EA	SPTX PART #	SIZE	COST EA	SPTX PART #	SIZE	COST EA	SPTX PART #
S	\$ 112.50	BNSF6673705	2XL	\$ 115.00	BNSF6673709	LG TALL	\$ 115.00	BNSF6673714
M	\$ 112.50	BNSF6673706	3XL	\$ 117.50	BNSF6673710	XL TALL	\$ 115.00	BNSF6673715
L	\$ 112.50	BNSF6673707	4XL	\$ 120.00	BNSF6673711	2XL TALL	\$ 117.50	BNSF6673716
XL	\$ 112.50	BNSF6673708	5XL	\$ 122.50	BNSF6673712	3XL TALL	\$ 120.00	BNSF6673717
			6XL	\$ 125.00	BNSF6673713	4XL TALL	\$ 122.50	BNSF6673718
						5XL TALL	\$ 125.00	BNSF6673719
						6XL TALL	\$ 127.50	BNSF6673720



**CLASS II 9OZ LIGHT WEIGHT INDURA ULTRA SOFT FR 10 POCKET SURVEYORS VEST**  
ANSI STYLE CLASS II 7OZ LIGHT WEIGHT INDURA ULTRA SOFT FR HOT WORK & ELECTRICAL RATED SAFETY VEST; ASTM F1506 AND NFPA 70E; ORANGE; ZIPPER CLOSURE

SIZE	COST EA	SPTX PART #	SIZE	COST EA	SPTX PART #	SIZE	COST EA	SPTX PART #
S	\$ 112.50	BNSF6693705	2XL	\$ 115.00	BNSF6693709	LG TALL	\$ 115.00	BNSF6693714
M	\$ 112.50	BNSF6693706	3XL	\$ 117.50	BNSF6693710	XL TALL	\$ 115.00	BNSF6693715
L	\$ 112.50	BNSF6693707	4XL	\$ 120.00	BNSF6693711	2XL TALL	\$ 117.50	BNSF6693716
XL	\$ 112.50	BNSF6693708	5XL	\$ 122.50	BNSF6693712	3XL TALL	\$ 120.00	BNSF6693717
			6XL	\$ 125.00	BNSF6693713	4XL TALL	\$ 122.50	BNSF6693718
						5XL TALL	\$ 125.00	BNSF6693719
						6XL TALL	\$ 127.50	BNSF6693720



**CLASS III 7OZ LIGHT WEIGHT INDURA ULTRA SOFT FR 10 POCKET SURVEYORS VEST**  
ANSI STYLE CLASS II 7OZ LIGHT WEIGHT INDURA ULTRA SOFT FR HOT WORK & ELECTRICAL RATED SAFETY VEST; ASTM F1506 AND NFPA 70E; ORANGE; ZIPPER CLOSURE

SIZE	COST EA	SPTX PART #	SIZE	COST EA	SPTX PART #	SIZE	COST EA	SPTX PART #
S	\$ 120.50	BNSF6873705	2XL	\$ 123.00	BNSF6873709	LG TALL	\$ 123.00	BNSF6873714
M	\$ 120.50	BNSF6873706	3XL	\$ 125.50	BNSF6873710	XL TALL	\$ 123.00	BNSF6873715
L	\$ 120.50	BNSF6873707	4XL	\$ 128.00	BNSF6873711	2XL TALL	\$ 125.50	BNSF6873716
XL	\$ 120.50	BNSF6873708	5XL	\$ 130.50	BNSF6873712	3XL TALL	\$ 128.00	BNSF6873717
			6XL	\$ 133.00	BNSF6873713	4XL TALL	\$ 130.50	BNSF6873718
						5XL TALL	\$ 133.00	BNSF6873719
						6XL TALL	\$ 135.50	BNSF6873720



**CLASS III 9OZ LIGHT WEIGHT INDURA ULTRA SOFT FR 10 POCKET SURVEYORS VEST**  
ANSI STYLE CLASS II 7OZ LIGHT WEIGHT INDURA ULTRA SOFT FR HOT WORK & ELECTRICAL RATED SAFETY VEST; ASTM F1506 AND NFPA 70E; ORANGE; ZIPPER CLOSURE

SIZE	COST EA	SPTX PART #	SIZE	COST EA	SPTX PART #	SIZE	COST EA	SPTX PART #
S	\$ 120.50	BNSF6893705	2XL	\$ 123.00	BNSF6893709	LG TALL	\$ 123.00	BNSF6893714
M	\$ 120.50	BNSF6893706	3XL	\$ 125.50	BNSF6893710	XL TALL	\$ 123.00	BNSF6893715
L	\$ 120.50	BNSF6893707	4XL	\$ 128.00	BNSF6893711	2XL TALL	\$ 125.50	BNSF6893716
XL	\$ 120.50	BNSF6893708	5XL	\$ 130.50	BNSF6893712	3XL TALL	\$ 128.00	BNSF6893717
			6XL	\$ 133.00	BNSF6893713	4XL TALL	\$ 130.50	BNSF6893718
						5XL TALL	\$ 133.00	BNSF6893719
						6XL TALL	\$ 135.50	BNSF6893720

# FLAME RESISTANT

## // T-SHIRTS



**CLASS II 6OZ LIGHT-WEIGHT INDURA ULTRA SOFT JERSEY FR SHORT SLEEVE T-SHIRT WITH POCKET**  
ANSI STYLE CLASS II 6OZ LIGHT-WEIGHT INDURA ULTRA SOFT JERSEY FR SHORT SLEEVE T-SHIRT WITH POCKET; ASTM F1506 AND NFPA 70E; ORANGE

SIZE	COST EA	SPTX PART #	SIZE	COST EA	SPTX PART #	SIZE	COST EA	SPTX PART #
S	\$ 50.00	BNSF6403705	2XL	\$ 53.30	BNSF6403709	LG TALL	\$ 53.30	BNSF6403714
M	\$ 50.00	BNSF6403706	3XL	\$ 55.50	BNSF6403710	XL TALL	\$ 53.30	BNSF6403715
L	\$ 50.00	BNSF6403707	4XL	\$ 57.70	BNSF6403711	2XL TALL	\$ 55.50	BNSF6403716
XL	\$ 50.00	BNSF6403708	5XL	\$ 59.90	BNSF6403712	3XL TALL	\$ 57.70	BNSF6403717
			6XL	\$ 62.10	BNSF6403713	4XL TALL	\$ 59.90	BNSF6403718
						5XL TALL	\$ 62.10	BNSF6403719
						6XL TALL	\$ 64.30	BNSF6403720



**CLASS III 6OZ LIGHT-WEIGHT INDURA SOFT JERSEY FR SHORT SLEEVE T-SHIRT WITH POCKET**  
ANSI STYLE CLASS III 6OZ LIGHT-WEIGHT INDURA SOFT JERSEY FR SHORT SLEEVE T-SHIRT WITH POCKET; ASTM F1506 AND NFPA 70E; ORANGE

SIZE	COST EA	SPTX PART #	SIZE	COST EA	SPTX PART #	SIZE	COST EA	SPTX PART #
S	\$ 55.50	BNSF6473705	2XL	\$ 58.80	BNSF6473709	LG TALL	\$ 58.80	BNSF6473714
M	\$ 55.50	BNSF6473706	3XL	\$ 61.00	BNSF6473710	XL TALL	\$ 58.80	BNSF6473715
L	\$ 55.50	BNSF6473707	4XL	\$ 63.20	BNSF6473711	2XL TALL	\$ 61.00	BNSF6473716
XL	\$ 55.50	BNSF6473708	5XL	\$ 65.40	BNSF6473712	3XL TALL	\$ 63.20	BNSF6473717
			6XL	\$ 67.60	BNSF6473713	4XL TALL	\$ 65.40	BNSF6473718
						5XL TALL	\$ 67.60	BNSF6473719
						6XL TALL	\$ 96.80	BNSF6473720



**CLASS II 6OZ LIGHT-WEIGHT INDURA ULTRA SOFT JERSEY FR LONG SLEEVE T-SHIRT WITH POCKET**  
ANSI STYLE CLASS II 6OZ LIGHT-WEIGHT INDURA ULTRA SOFT JERSEY FR LONG SLEEVE T-SHIRT WITH POCKET; ASTM F1506 AND NFPA 70E; ORANGE

SIZE	COST EA	SPTX PART #	SIZE	COST EA	SPTX PART #	SIZE	COST EA	SPTX PART #
S	\$ 58.80	BNSF6433705	2XL	\$ 62.10	BNSF6433709	LG TALL	\$ 62.10	BNSF6433714
M	\$ 58.80	BNSF6433706	3XL	\$ 64.30	BNSF6433710	XL TALL	\$ 62.10	BNSF6433715
L	\$ 58.80	BNSF6433707	4XL	\$ 66.50	BNSF6433711	2XL TALL	\$ 64.30	BNSF6433716
XL	\$ 58.80	BNSF6433708	5XL	\$ 68.70	BNSF6433712	3XL TALL	\$ 66.50	BNSF6433717
			6XL	\$ 70.90	BNSF6433713	4XL TALL	\$ 68.70	BNSF6433718
						5XL TALL	\$ 70.90	BNSF6433719
						6XL TALL	\$ 73.10	BNSF6433720



**CLASS III 6OZ LIGHT-WEIGHT INDURA SOFT JERSEY FR LONG SLEEVE T-SHIRT WITH POCKET**  
ANSI STYLE CLASS III 6OZ LIGHT-WEIGHT INDURA UKTRA SOFT JERSEY FR LONG SLEEVE T-SHIRT WITH POCKET; ASTM F1506 AND NFPA 70E; ORANGE

SIZE	COST EA	SPTX PART #	SIZE	COST EA	SPTX PART #	SIZE	COST EA	SPTX PART #
S	\$ 63.20	BNSF6493705	2XL	\$ 66.50	BNSF6493709	LG TALL	\$ 66.50	BNSF6493714
M	\$ 63.20	BNSF6493706	3XL	\$ 68.70	BNSF6493710	XL TALL	\$ 66.50	BNSF6493715
L	\$ 63.20	BNSF6493707	4XL	\$ 70.90	BNSF6493711	2XL TALL	\$ 68.70	BNSF6493716
XL	\$ 63.20	BNSF6493708	5XL	\$ 73.10	BNSF6493712	3XL TALL	\$ 70.90	BNSF6493717
			6XL	\$ 75.30	BNSF6493713	4XL TALL	\$ 73.10	BNSF6493718
						5XL TALL	\$ 75.30	BNSF6493719
						6XL TALL	\$ 77.50	BNSF6493720F



### // T-SHIRTS



**CLASS III 6OZ LIGHT-WEIGHT INDURA SOFT JERSEY FR SHORT SLEEVE T-SHIRT WITHOUT POCKET**  
ANSI STYLE CLASS III 6OZ LIGHT-WEIGHT INDURA SOFT JERSEY FR SHORT SLEEVE T-SHIRT WITHOUT POCKET; ASTM F1506 AND NFPA 70E; ORANGE

SIZE	COST EA	SPTX PART #	SIZE	COST EA	SPTX PART #	SIZE	COST EA	SPTX PART #
S	\$ 58.50	BNSF6463705	2XL	\$ 61.80	BNSF6463709	LG TALL	\$ 61.80	BNSF6463714
M	\$ 58.50	BNSF6463706	3XL	\$ 64.00	BNSF6463710	XL TALL	\$ 61.80	BNSF6463715
L	\$ 58.50	BNSF6463707	4XL	\$ 66.20	BNSF6463711	2XL TALL	\$ 64.00	BNSF6463716
XL	\$ 58.50	BNSF6463708	5XL	\$ 68.40	BNSF6463712	3XL TALL	\$ 66.20	BNSF6463717
			6XL	\$ 70.60	BNSF6463713	4XL TALL	\$ 68.40	BNSF6463718
						5XL TALL	\$ 70.60	BNSF6463719
						6XL TALL	\$ 72.80	BNSF6463720



**CLASS III 6OZ LIGHT-WEIGHT INDURA SOFT JERSEY FR LONG SLEEVE T-SHIRT WITHOUT POCKET**  
ANSI STYLE CLASS III 6OZ LIGHT-WEIGHT INDURA SOFT JERSEY FR LONG SLEEVE T-SHIRT WITHOUT POCKET; ASTM F1506 AND NFPA 70E; ORANGE

SIZE	COST EA	SPTX PART #	SIZE	COST EA	SPTX PART #	SIZE	COST EA	SPTX PART #
S	\$ 66.20	BNSF6483705	2XL	\$ 69.50	BNSF6483709	LG TALL	\$ 69.50	BNSF6483714
M	\$ 66.20	BNSF6483706	3XL	\$ 71.70	BNSF6483710	XL TALL	\$ 69.50	BNSF6483715
L	\$ 66.20	BNSF6483707	4XL	\$ 73.90	BNSF6483711	2XL TALL	\$ 71.70	BNSF6483716
XL	\$ 66.20	BNSF6483708	5XL	\$ 76.10	BNSF6483712	3XL TALL	\$ 73.50	BNSF6483717
			6XL	\$ 78.30	BNSF6483713	4XL TALL	\$ 76.70	BNSF6483718
						5XL TALL	\$ 78.30	BNSF6483719
						6XL TALL	\$ 80.50	BNSF6483720

### // WORK SHIRTS



**CLASS III 7OZ LIGHT-WEIGHT INDURA ULTRA SOFT FR SHORT SLEEVE BUTTON DOWN WORK SHIRT**  
ANSI STYLE CLASS III 7OZ LIGHT WEIGHT INDURA ULTRA SOFT FR SHORT SLEEVE BUTTON DOWN WORK SHIRT; ASTM F1506 AND NFPA 70E; ORANGE; BUTTON CLOSURE

SIZE	COST EA	SPTX PART #	SIZE	COST EA	SPTX PART #	SIZE	COST EA	SPTX PART #
S	\$ 95.43	BNSF7573705	2XL	\$ 100.93	BNSF7573709	LG TALL	\$ 100.93	BNSF7573714
M	\$ 95.43	BNSF7573706	3XL	\$ 105.33	BNSF7573710	XL TALL	\$ 100.93	BNSF7573715
L	\$ 95.43	BNSF7573707	4XL	\$ 108.63	BNSF7573711	2XL TALL	\$ 105.33	BNSF7573716
XL	\$ 95.43	BNSF7573708	5XL	\$ 110.83	BNSF7573712	3XL TALL	\$ 108.63	BNSF7573717
			6XL	\$ 113.03	BNSF7573713	4XL TALL	\$ 110.83	BNSF7573718
						5XL TALL	\$ 113.03	BNSF7573719
						6XL TALL	\$ 118.68	BNSF7573720



**CLASS III 7OZ LIGHT-WEIGHT INDURA ULTRA SOFT FR SHORT SLEEVE BUTTON DOWN WORK SHIRT WITH FALL PROTECTION**  
ANSI STYLE CLASS III 7OZ LIGHT WEIGHT INDURA ULTRA SOFT FR SHORT SLEEVE BUTTON DOWN WORK SHIRT; ASTM F1506 AND NFPA 70E; ORANGE; BUTTON CLOSURE WITH FALL PROTECTION

SIZE	COST EA	SPTX PART #	SIZE	COST EA	SPTX PART #	SIZE	COST EA	SPTX PART #
S	\$ 103.13	BNSF7573705FP	2XL	\$ 108.63	BNSF7573709FP	LG TALL	\$ 108.63	BNSF7573714FP
M	\$ 103.13	BNSF7573706FP	3XL	\$ 113.03	BNSF7573710FP	XL TALL	\$ 108.63	BNSF7573715FP
L	\$ 103.13	BNSF7573707FP	4XL	\$ 116.33	BNSF7573711FP	2XL TALL	\$ 113.03	BNSF7573716FP
XL	\$ 103.13	BNSF7573708FP	5XL	\$ 118.53	BNSF7573712FP	3XL TALL	\$ 116.33	BNSF7573717FP
			6XL	\$ 120.73	BNSF7573713FP	4XL TALL	\$ 118.53	BNSF7573718FP
						5XL TALL	\$ 120.73	BNSF7573719FP
						6XL TALL	\$ 122.93	BNSF7573720FP

# FLAME RESISTANT

## // WORK SHIRTS



### CLASS III 7OZ LIGHT-WEIGHT INDURA ULTRA SOFT FR LONG SLEEVE BUTTON DOWN WORK SHIRT

ANSI STYLE CLASS III 7OZ LIGHT WEIGHT INDURA ULTRA SOFT FR LONG SLEEVE BUTTON DOWN WORK SHIRT; ASTM F1506 AND NFPA 70E; ORANGE; BUTTON CLOSURE

SIZE	COST EA	SPTX PART #	SIZE	COST EA	SPTX PART #	SIZE	COST EA	SPTX PART #
S	\$ 103.13	BNSF7553705	2XL	\$ 108.63	BNSF7553709	LG TALL	\$ 108.63	BNSF7553714
M	\$ 103.13	BNSF7553706	3XL	\$ 113.03	BNSF7553710	XL TALL	\$ 108.63	BNSF7553715
L	\$ 103.13	BNSF7553707	4XL	\$ 116.33	BNSF7553711	2XL TALL	\$ 113.03	BNSF7553716
XL	\$ 103.13	BNSF7553708	5XL	\$ 118.53	BNSF7553712	3XL TALL	\$ 116.33	BNSF7553717
			6XL	\$ 120.73	BNSF7553713	4XL TALL	\$ 118.53	BNSF7553718
						5XL TALL	\$ 120.73	BNSF7553719
						6XL TALL	\$ 122.93	BNSF7553720



### CLASS III 7OZ LIGHT-WEIGHT INDURA ULTRA SOFT FR LONG SLEEVE BUTTON DOWN WORK SHIRT WITH FALL PROTECTION

ANSI STYLE CLASS III 7OZ LIGHT WEIGHT INDURA ULTRA SOFT FR LONG SLEEVE BUTTON DOWN WORK SHIRT; ASTM F1506 AND NFPA 70E; ORANGE; BUTTON CLOSURE WITH FALL PROTECTION

SIZE	COST EA	SPTX PART #	SIZE	COST EA	SPTX PART #	SIZE	COST EA	SPTX PART #
S	\$ 113.44	BNSF7553705FP	2XL	\$ 119.49	BNSF7553709FP	LG TALL	\$ 119.49	BNSF7553714FP
M	\$ 113.44	BNSF7553706FP	3XL	\$ 124.33	BNSF7553710FP	XL TALL	\$ 119.49	BNSF7553715FP
L	\$ 113.44	BNSF7553707FP	4XL	\$ 127.96	BNSF7553711FP	2XL TALL	\$ 124.33	BNSF7553716FP
XL	\$ 113.44	BNSF7553708FP	5XL	\$ 130.38	BNSF7553712FP	3XL TALL	\$ 127.96	BNSF7553717FP
			6XL	\$ 132.80	BNSF7553713FP	4XL TALL	\$ 130.38	BNSF7553718FP
						5XL TALL	\$ 132.80	BNSF7553719FP
						6XL TALL	\$ 135.22	BNSF7553720FP

## // FLEECE OUTERWEAR



### CLASS II 11OZ HEAVYWEIGHT FLEECE INDURA ULTRA SOFT FR LONG SLEEVE CREWNECK SWEATSHIRT

ANSI STYLE CLASS II 11OZ HEAVYWEIGHT FLEECE INDURA ULTRA SOFT FR LONG SLEEVE CREWNECK SWEATSHIRT; ASTM F1506 AND NFPA 70E; ORANGE

SIZE	COST EA	SPTX PART #	SIZE	COST EA	SPTX PART #
S	\$ 71.37	BNSF9203705	2XL	\$ 76.21	BNSF9203709
M	\$ 71.37	BNSF9203706	3XL	\$ 78.63	BNSF9203710
L	\$ 71.37	BNSF9203707	4XL	\$ 81.05	BNSF9203711
XL	\$ 71.37	BNSF9203708	5XL	\$ 83.47	BNSF9203712
			6XL	\$ 85.89	BNSF9203713



### CLASS III 11OZ HEAVYWEIGHT FLEECE INDURA ULTRA SOFT FR LONG SLEEVE CREWNECK SWEATSHIRT

ANSI STYLE CLASS III 11OZ HEAVYWEIGHT FLEECE INDURA ULTRA SOFT FR LONG SLEEVE CREWNECK SWEATSHIRT; ASTM F1506 AND NFPA 70E; ORANGE

SIZE	COST EA	SPTX PART #	SIZE	COST EA	SPTX PART #
S	\$ 76.21	BNSF9233705	2XL	\$ 81.05	BNSF9233709
M	\$ 76.21	BNSF9233706	3XL	\$ 83.47	BNSF9233710
L	\$ 76.21	BNSF9233707	4XL	\$ 85.89	BNSF9233711
XL	\$ 76.21	BNSF9233708	5XL	\$ 88.31	BNSF9233712
			6XL	\$ 90.73	BNSF9233713





## // FLEECE OUTERWEAR



### CLASS II 11OZ HEAVYWEIGHT INDURA ULTRA SOFT FR LONG SLEEVE HOODED SWEATSHIRT

ANSI STYLE CLASS II 11OZ HEAVYWEIGHT INDURA ULTRA SOFT FR LONG SLEEVE HOODED SWEATSHIRT; ASTM F1506 AND NFPA 70E; ORANGE

SIZE	COST EA	SPTX PART #	SIZE	COST EA	SPTX PART #
S	\$ 76.21	BNSF9403705	2XL	\$ 81.05	BNSF9403709
M	\$ 76.21	BNSF9403706	3XL	\$ 83.47	BNSF9403710
L	\$ 76.21	BNSF9403707	4XL	\$ 85.89	BNSF9403711
XL	\$ 76.21	BNSF9403708	5XL	\$ 88.31	BNSF9403712
			6XL	\$ 90.73	BNSF9403713



### CLASS III 11OZ HEAVYWEIGHT INDURA ULTRA SOFT FR LONG SLEEVE HOODED SWEATSHIRT

ANSI STYLE CLASS III 11OZ HEAVYWEIGHT INDURA ULTRA SOFT FR LONG SLEEVE HOODED SWEATSHIRT; ASTM F1506 AND NFPA 70E; ORANGE

SIZE	COST EA	SPTX PART #	SIZE	COST EA	SPTX PART #
S	\$ 81.05	BNSF9433705	2XL	\$ 85.89	BNSF9433709
M	\$ 81.05	BNSF9433706	3XL	\$ 88.31	BNSF9433710
L	\$ 81.05	BNSF9433707	4XL	\$ 90.73	BNSF9433711
XL	\$ 81.05	BNSF9433708	5XL	\$ 93.15	BNSF9433712
			6XL	\$ 95.57	BNSF9433713



### CLASS II 11OZ HEAVYWEIGHT INDURA ULTRA SOFT FR LONG SLEEVE FULL ZIPPER HOODED SWEATSHIRT

ANSI STYLE CLASS II 11OZ HEAVYWEIGHT INDURA ULTRA SOFT FR LONG SLEEVE FULL ZIPPER HOODED SWEATSHIRT; ASTM F1506 AND NFPA 70E; ORANGE

SIZE	COST EA	SPTX PART #	SIZE	COST EA	SPTX PART #
S	\$ 81.05	BNSF9603705	2XL	\$ 85.89	BNSF9603709
M	\$ 81.05	BNSF9603706	3XL	\$ 88.31	BNSF9603710
L	\$ 81.05	BNSF9603707	4XL	\$ 90.73	BNSF9603711
XL	\$ 81.05	BNSF9603708	5XL	\$ 93.15	BNSF9603712
			6XL	\$ 95.57	BNSF9603713



### CLASS III 11OZ HEAVYWEIGHT INDURA ULTRA SOFT FR LONG SLEEVE FULL ZIPPER HOODED SWEATSHIRT

ANSI STYLE CLASS III 11OZ HEAVYWEIGHT INDURA ULTRA SOFT FR LONG SLEEVE FULL ZIPPER HOODED SWEATSHIRT; ASTM F1506 AND NFPA 70E; ORANGE

SIZE	COST EA	SPTX PART #	SIZE	COST EA	SPTX PART #
S	\$ 85.89	BNSF9633705	2XL	\$ 90.73	BNSF9633709
M	\$ 85.89	BNSF9633706	3XL	\$ 93.15	BNSF9633710
L	\$ 85.89	BNSF9633707	4XL	\$ 95.57	BNSF9633711
XL	\$ 85.89	BNSF9633708	5XL	\$ 97.99	BNSF9633712
			6XL	\$ 100.41	BNSF9633713

# FLAME RESISTANT

## // WELDING JACKETS



### CLASS III 7OZ LIGHT WEIGHT INDURA ULTRA SOFT BODY WITH 11OZ INDURA ULTRA SOFT SLEEVES FR WELDING & ELECTRICAL RATED JACKET SNAP CLOSURE

ANSI STYLE CLASS III 7OZ LIGHT WEIGHT INDURA ULTRA SOFT BODY WITH 11OZ INDURA ULTRA SOFT SLEEVES FR WELDING & ELECTRICAL RATED JACKET; ASTM F1506 AND NFPA 70E; ORANGE; SNAP CLOSURE

SIZE	COST EA	SPTX PART #	SIZE	COST EA	SPTX PART #	SIZE	COST EA	SPTX PART #
S	\$ 114.13	BNSF9973705	2XL	\$ 119.63	BNSF9973709	LG TALL	\$ 119.63	BNSF9973714
M	\$ 114.13	BNSF9973706	3XL	\$ 124.03	BNSF9973710	XL TALL	\$ 119.63	BNSF9973715
L	\$ 114.13	BNSF9973707	4XL	\$ 127.33	BNSF9973711	2XL TALL	\$ 124.03	BNSF9973716
XL	\$ 114.13	BNSF9973708	5XL	\$ 129.53	BNSF9973712	3XL TALL	\$ 127.33	BNSF9973717
			6XL	\$ 131.73	BNSF9973713	4XL TALL	\$ 129.73	BNSF9973718
						5XL TALL	\$ 131.73	BNSF9973719
						6XL TALL	\$ 133.93	BNSF9973720



### CLASS III 7OZ LIGHT WEIGHT INDURA ULTRA SOFT BODY WITH 11OZ INDURA ULTRA SOFT SLEEVES FR WELDING & ELECTRICAL RATED JACKET SNAP CLOSURE WITH FALL PROTECTION

ANSI STYLE CLASS III 7OZ LIGHT WEIGHT INDURA ULTRA SOFT BODY WITH 11OZ INDURA ULTRA SOFT SLEEVES FR WELDING & ELECTRICAL RATED JACKET; ASTM F1506 AND NFPA 70E; ORANGE; SNAP CLOSURE; WITH FALL

SIZE	COST EA	SPTX PART #	SIZE	COST EA	SPTX PART #	SIZE	COST EA	SPTX PART #
S	\$ 125.54	BNSF9973705FP	2XL	\$ 131.59	BNSF9973709FP	LG TALL	\$ 131.59	BNSF9973714FP
M	\$ 125.54	BNSF9973706FP	3XL	\$ 136.43	BNSF9973710FP	XL TALL	\$ 131.59	BNSF9973715FP
L	\$ 125.54	BNSF9973707FP	4XL	\$ 140.06	BNSF9973711FP	2XL TALL	\$ 136.43	BNSF9973716FP
XL	\$ 125.54	BNSF9973708FP	5XL	\$ 142.48	BNSF9973712FP	3XL TALL	\$ 140.06	BNSF9973717FP
			6XL	\$ 144.90	BNSF9973713FP	4XL TALL	\$ 142.48	BNSF9973718FP
						5XL TALL	\$ 144.90	BNSF9973719FP
						6XL TALL	\$ 147.32	BNSF9973720FP



### CLASS III 9OZ MID-WEIGHT INDURA ULTRA SOFT BODY WITH 11OZ INDURA ULTRA SOFT SLEEVES FR WELDING & ELECTRICAL RATED JACKET SNAP CLOSURE

ANSI STYLE CLASS III 9OZ MID-WEIGHT INDURA ULTRA SOFT BODY WITH 11OZ INDURA ULTRA SOFT SLEEVES FR WELDING & ELECTRICAL RATED JACKET; ASTM F1506 AND NFPA 70E; ORANGE; SNAP CLOSURE

SIZE	COST EA	SPTX PART #	SIZE	COST EA	SPTX PART #	SIZE	COST EA	SPTX PART #
S	\$ 114.13	BNSF9993705	2XL	\$ 119.63	BNSF9993709	LG TALL	\$ 119.63	BNSF9993714
M	\$ 114.13	BNSF9993706	3XL	\$ 124.03	BNSF9993710	XL TALL	\$ 119.63	BNSF9993715
L	\$ 114.13	BNSF9993707	4XL	\$ 127.33	BNSF9993711	2XL TALL	\$ 124.03	BNSF9993716
XL	\$ 114.13	BNSF9993708	5XL	\$ 129.53	BNSF9993712	3XL TALL	\$ 127.33	BNSF9993717
			6XL	\$ 131.73	BNSF9993713	4XL TALL	\$ 129.53	BNSF9993718
						5XL TALL	\$ 131.73	BNSF9993719
						6XL TALL	\$ 133.93	BNSF9993720



### CLASS III 9OZ MID-WEIGHT INDURA ULTRA SOFT BODY 11OZ INDURA ULTRA SOFT SLEEVES FR WELDING & ELECTRICAL RATED JACKET SNAP CLOSURE WITH FALL PROTECTION

CLASS III 9OZ MID-WEIGHT INDURA ULTRA SOFT BODY WITH 11OZ INDURA ULTRA SOFT SLEEVES FR WELDING & ELECTRICAL RATED JACKET; ASTM F1506 AND NFPA 70E; ORANGE; SNAP CLOSURE; WITH FALL PROTECTION

SIZE	COST EA	SPTX PART #	SIZE	COST EA	SPTX PART #	SIZE	COST EA	SPTX PART #
S	\$ 125.54	BNSF9993705FP	2XL	\$ 131.43	BNSF9993709FP	LG TALL	\$ 131.59	BNSF9993714FP
M	\$ 125.54	BNSF9993706FP	3XL	\$ 136.43	BNSF9993710FP	XL TALL	\$ 131.59	BNSF9993715FP
L	\$ 125.54	BNSF9993707FP	4XL	\$ 140.06	BNSF9993711FP	2XL TALL	\$ 136.43	BNSF9993716FP
XL	\$ 125.54	BNSF9993708FP	5XL	\$ 142.48	BNSF9993712FP	3XL TALL	\$ 140.06	BNSF9993717FP
			6XL	\$ 144.90	BNSF9993713FP	4XL TALL	\$ 142.48	BNSF9993718FP
						5XL TALL	\$ 144.90	BNSF9993719FP
						6XL TALL	\$ 147.32	BNSF9993720FP



### // WELDING JACKETS



#### CLASS III 110Z HEAVYWEIGHT INDURA ULTRA SOFT FR WELDING & ELECTRICAL RATED JACKET SNAP CLOSURE

ANSI STYLE CLASS III 110Z HEAVYWEIGHT INDURA ULTRA SOFT FR WELDING & ELECTRICAL RATED JACKET; ASTM F1506 AND NFPA 70E; ORANGE; SNAP CLOSURE

SIZE	COST EA	SPTX PART #	SIZE	COST EA	SPTX PART #	SIZE	COST EA	SPTX PART #
S	\$ 137.64	BNSF9113705	2XL	\$ 143.69	BNSF9113709	LG TALL	\$ 143.69	BNSF9113714
M	\$ 137.64	BNSF9113706	3XL	\$ 148.53	BNSF9113710	XL TALL	\$ 143.69	BNSF9113715
L	\$ 137.64	BNSF9113707	4XL	\$ 152.16	BNSF9113711	2XL TALL	\$ 148.53	BNSF9113716
XL	\$ 137.64	BNSF9113708	5XL	\$ 154.58	BNSF9113712	3XL TALL	\$ 152.16	BNSF9113717
			6XL	\$ 157.00	BNSF9113713	4XL TALL	\$ 154.58	BNSF9113718
						5XL TALL	\$ 157.00	BNSF9113719
						6XL TALL	\$ 159.42	BNSF9113720



#### CLASS III 110Z HEAVYWEIGHT INDURA ULTRA SOFT FR WELDING & ELECTRICAL RATED JACKET SNAP CLOSURE WITH FALL PROTECTION

ANSI STYLE CLASS III 110Z HEAVYWEIGHT INDURA ULTRA SOFT FR WELDING & ELECTRICAL RATED JACKET; ASTM F1506 AND NFPA 70E; ORANGE; SNAP CLOSURE WITH FALL PROTECTION

SIZE	COST EA	SPTX PART #	SIZE	COST EA	SPTX PART #	SIZE	COST EA	SPTX PART #
S	\$ 149.81	BNSF9113705FP	2XL	\$ 154.37	BNSF9113709FP	LG TALL	\$ 154.37	BNSF9113714FP
M	\$ 149.81	BNSF9113706FP	3XL	\$ 159.37	BNSF9113710FP	XL TALL	\$ 154.37	BNSF9113715FP
L	\$ 149.81	BNSF9113707FP	4XL	\$ 164.16	BNSF9113711FP	2XL TALL	\$ 159.53	BNSF9113716FP
XL	\$ 149.81	BNSF9113708FP	5XL	\$ 169.58	BNSF9113712FP	3XL TALL	\$ 164.16	BNSF9113717FP
			6XL	\$ 174.00	BNSF9113713FP	4XL TALL	\$ 169.58	BNSF9113718FP
						5XL TALL	\$ 174.00	BNSF9113719FP
						6XL TALL	\$ 179.00	BNSF9113720FP



#### CLASS III 130Z SUPER HEAVYWEIGHT INDURA FR WELDING & ELECTRICAL RATED JACKET SNAP CLOSURE

ANSI STYLE CLASS III 130Z SUPER HEAVYWEIGHT INDURA FR WELDING & ELECTRICAL RATED JACKET; ASTM F1506 AND NFPA 70E; ORANGE; SNAP CLOSURE

SIZE	COST EA	SPTX PART #	SIZE	COST EA	SPTX PART #	SIZE	COST EA	SPTX PART #
S	\$ 125.13	BNSF9153705	2XL	\$ 130.63	BNSF9153709	LG TALL	\$ 130.63	BNSF9153714
M	\$ 125.13	BNSF9153706	3XL	\$ 135.03	BNSF9153710	XL TALL	\$ 130.63	BNSF9153715
L	\$ 125.13	BNSF9153707	4XL	\$ 138.33	BNSF9153711	2XL TALL	\$ 135.03	BNSF9153716
XL	\$ 125.13	BNSF9153708	5XL	\$ 140.53	BNSF9153712	3XL TALL	\$ 138.33	BNSF9153717
			6XL	\$ 142.73	BNSF9153713	4XL TALL	\$ 140.53	BNSF9153718
						5XL TALL	\$ 142.73	BNSF9153719
						6XL TALL	\$ 144.93	BNSF9153720



#### CLASS III 130Z SUPER HEAVYWEIGHT INDURA FR WELDING & ELECTRICAL RATED JACKET SNAP CLOSURE WITH FALL PROTECTION

ANSI STYLE CLASS III 130Z SUPER HEAVYWEIGHT INDURA FR WELDING & ELECTRICAL RATED JACKET; ASTM F1506 AND NFPA 70E; ORANGE; SNAP CLOSURE; WITH FALL PROTECTION

SIZE	COST EA	SPTX PART #	SIZE	COST EA	SPTX PART #	SIZE	COST EA	SPTX PART #
S	\$ 147.32	BNSF9153705FP	2XL	\$ 153.37	BNSF9153709FP	LG TALL	\$ 153.37	BNSF9153714FP
M	\$ 147.32	BNSF9153706FP	3XL	\$ 158.21	BNSF9153710FP	XL TALL	\$ 153.37	BNSF9153715FP
L	\$ 147.32	BNSF9153707FP	4XL	\$ 161.84	BNSF9153711FP	2XL TALL	\$ 158.21	BNSF9153716FP
XL	\$ 147.32	BNSF9153708FP	5XL	\$ 164.26	BNSF9153712FP	3XL TALL	\$ 161.84	BNSF9153717FP
			6XL	\$ 166.68	BNSF9153713FP	4XL TALL	\$ 164.26	BNSF9153718FP
						5XL TALL	\$ 166.68	BNSF9153719FP
						6XL TALL	\$ 169.10	BNSF9153720FP

# FLAME RESISTANT

## // WELDING JACKETS

**NEW  
ITEM**



### CLASS II 7 OZ HEAVY-WEIGHT INDURA ULTRA SOFT BODY W/ 3 OZ CHAP SPLIT LEATHER SUEDE SLEEVES FR WELDING JACKET

ANSI STYLE CLASS II 7 OZ HEAVY-WEIGHT INDURA ULTRA SOFT BODY W/ 3 OZ CHAP SPLIT LEATHER SUEDE SLEEVES FR WELDING JACKET ; ASTM F1506 AND NFPA 70E; ORANGE; SNAP CLOSURE

SIZE	COST EA	SPTX PART #	SIZE	COST EA	SPTX PART #	SIZE	COST EA	SPTX PART #
S	\$ 175.50	BNSF9073705	2XL	\$ 185.50	BNSF9073709	LG TALL	\$ 183.50	BNSF9073714
M	\$ 175.50	BNSF9073706	3XL	\$ 190.50	BNSF9073710	XL TALL	\$ 183.50	BNSF9073715
L	\$ 175.50	BNSF9073707	4XL	\$ 195.50	BNSF9073711	2XL TALL	\$ 193.50	BNSF9073716
XL	\$ 175.50	BNSF9073708	5XL	\$ 200.50	BNSF9073712	3XL TALL	\$ 198.50	BNSF9073717
			6XL	\$ 205.50	BNSF9073713	4XL TALL	\$ 203.50	BNSF9073718
						5XL TALL	\$ 208.50	BNSF9073719
						6XL TALL	\$ 213.50	BNSF9073720

**NEW  
ITEM**



### CLASS II 7 OZ HEAVY-WEIGHT INDURA ULTRA SOFT BODY W/ 3 OZ CHAP SPLIT LEATHER SUEDE SLEEVES FR WELDING JACKET W/ FALL PROTECTION

ANSI STYLE CLASS II 7 OZ HEAVY-WEIGHT INDURA ULTRA SOFT BODY W/ 3 OZ CHAP SPLIT LEATHER SUEDE SLEEVES FR WELDING JACKET ; ASTM F1506 AND NFPA 70E; ORANGE; SNAP CLOSURE

SIZE	COST EA	SPTX PART #	SIZE	COST EA	SPTX PART #	SIZE	COST EA	SPTX PART #
S	\$ 190.50	BNSF9073705FP	2XL	\$ 200.50	BNSF9073709FP	LG TALL	\$ 200.50	BNSF9073714FP
M	\$ 190.50	BNSF9073706FP	3XL	\$ 205.50	BNSF9073710FP	XL TALL	\$ 200.50	BNSF9073715FP
L	\$ 190.50	BNSF9073707FP	4XL	\$ 210.50	BNSF9073711FP	2XL TALL	\$ 205.50	BNSF9073716FP
XL	\$ 190.50	BNSF9073708FP	5XL	\$ 215.50	BNSF9073712FP	3XL TALL	\$ 210.50	BNSF9073717FP
			6XL	\$ 220.50	BNSF9073713FP	4XL TALL	\$ 215.50	BNSF9073718FP
						5XL TALL	\$ 220.50	BNSF9073719FP
						6XL TALL	\$ 225.50	BNSF9073720FP

**NEW  
ITEM**



### CLASS II 9 OZ HEAVY-WEIGHT INDURA ULTRA SOFT BODY W/ 3 OZ CHAP SPLIT LEATHER SUEDE SLEEVES FR WELDING JACKET

ANSI STYLE CLASS II 9 OZ HEAVY-WEIGHT INDURA ULTRA SOFT BODY W/ 3 OZ CHAP SPLIT LEATHER SUEDE SLEEVES FR WELDING JACKET ; ASTM F1506 AND NFPA 70E; ORANGE; SNAP CLOSURE

SIZE	COST EA	SPTX PART #	SIZE	COST EA	SPTX PART #	SIZE	COST EA	SPTX PART #
S	\$ 175.50	BNSF9093705	2XL	\$ 185.50	BNSF9093709	LG TALL	\$ 183.50	BNSF9093714
M	\$ 175.50	BNSF9093706	3XL	\$ 190.50	BNSF9093710	XL TALL	\$ 183.50	BNSF9093715
L	\$ 175.50	BNSF9093707	4XL	\$ 195.50	BNSF9093711	2XL TALL	\$ 193.50	BNSF9093716
XL	\$ 175.50	BNSF9093708	5XL	\$ 200.50	BNSF9093712	3XL TALL	\$ 198.50	BNSF9093717
			6XL	\$ 205.50	BNSF9093713	4XL TALL	\$ 203.50	BNSF9093718
						5XL TALL	\$ 208.50	BNSF9093719
						6XL TALL	\$ 213.50	BNSF9093720

**NEW  
ITEM**



### CLASS II 9 OZ HEAVY-WEIGHT INDURA ULTRA SOFT BODY W/ 3 OZ CHAP SPLIT LEATHER SUEDE SLEEVES FR WELDING JACKET W/ FALL PROTECTION

ANSI STYLE CLASS II 9 OZ HEAVY-WEIGHT INDURA ULTRA SOFT BODY W/ 3 OZ CHAP SPLIT LEATHER SUEDE SLEEVES FR WELDING JACKET ; ASTM F1506 AND NFPA 70E; ORANGE; SNAP CLOSURE

SIZE	COST EA	SPTX PART #	SIZE	COST EA	SPTX PART #	SIZE	COST EA	SPTX PART #
S	\$ 190.50	BNSF9093705FP	2XL	\$ 200.50	BNSF9093709FP	LG TALL	\$ 200.50	BNSF9093714FP
M	\$ 190.50	BNSF9093706FP	3XL	\$ 205.50	BNSF9093710FP	XL TALL	\$ 200.50	BNSF9093715FP
L	\$ 190.50	BNSF9093707FP	4XL	\$ 210.50	BNSF9093711FP	2XL TALL	\$ 205.50	BNSF9093716FP
XL	\$ 190.50	BNSF9093708FP	5XL	\$ 215.50	BNSF9093712FP	3XL TALL	\$ 210.50	BNSF9093717FP
			6XL	\$ 220.50	BNSF9093713FP	4XL TALL	\$ 215.50	BNSF9093718FP
						5XL TALL	\$ 220.50	BNSF9093719FP
						6XL TALL	\$ 225.50	BNSF9093720FP





## // WELDING JACKETS

**NEW ITEM**



**CLASS II 11 OZ HEAVY-WEIGHT INDURA ULTRA SOFT BODY W/ 3 OZ CHAP SPLIT LEATHER SUEDE SLEEVES FR WELDING JACKET**  
ANSI STYLE CLASS II 11 OZ HEAVY-WEIGHT INDURA ULTRA SOFT BODY W/ 3 OZ CHAP SPLIT LEATHER SUEDE SLEEVES FR WELDING JACKET ; ASTM F1506 AND NFPA 70E; ORANGE; SNAP CLOSURE

SIZE	COST EA	SPTX PART #	SIZE	COST EA	SPTX PART #	SIZE	COST EA	SPTX PART #
S	\$ 175.50	BNSF9013705	2XL	\$ 185.50	BNSF9013709	LG TALL	\$ 183.50	BNSF9013714
M	\$ 175.50	BNSF9013706	3XL	\$ 190.50	BNSF9013710	XL TALL	\$ 183.50	BNSF9013715
L	\$ 175.50	BNSF9013707	4XL	\$ 195.50	BNSF9013711	2XL TALL	\$ 193.50	BNSF9013716
XL	\$ 175.50	BNSF9013708	5XL	\$ 200.50	BNSF9013712	3XL TALL	\$ 198.50	BNSF9013717
			6XL	\$ 205.50	BNSF9013713	4XL TALL	\$ 203.50	BNSF9013718
						5XL TALL	\$ 208.50	BNSF9013719
						6XL TALL	\$ 213.50	BNSF9013720

**NEW ITEM**



**CLASS II 11 OZ HEAVY-WEIGHT INDURA ULTRA SOFT BODY W/ 3 OZ CHAP SPLIT LEATHER SUEDE SLEEVES FR WELDING JACKET W/ FALL PROTECTION**  
ANSI STYLE CLASS II 11 OZ HEAVY-WEIGHT INDURA ULTRA SOFT BODY W/ 3 OZ CHAP SPLIT LEATHER SUEDE SLEEVES FR WELDING JACKET ; ASTM F1506 AND NFPA 70E; ORANGE; SNAP CLOSURE

SIZE	COST EA	SPTX PART #	SIZE	COST EA	SPTX PART #	SIZE	COST EA	SPTX PART #
S	\$ 190.50	BNSF9013705FP	2XL	\$ 200.50	BNSF9013709FP	LG TALL	\$ 200.50	BNSF9013714FP
M	\$ 190.50	BNSF9013706FP	3XL	\$ 205.50	BNSF9013710FP	XL TALL	\$ 200.50	BNSF9013715FP
L	\$ 190.50	BNSF9013707FP	4XL	\$ 210.50	BNSF9013711FP	2XL TALL	\$ 205.50	BNSF9013716FP
XL	\$ 190.50	BNSF9013708FP	5XL	\$ 215.50	BNSF9013712FP	3XL TALL	\$ 210.50	BNSF9013717FP
			6XL	\$ 220.50	BNSF9013713FP	4XL TALL	\$ 215.50	BNSF9013718FP
						5XL TALL	\$ 220.50	BNSF9013719FP
						6XL TALL	\$ 225.50	BNSF9013720FP



# FLAME RESISTANT

## // JACKETS



### CLASS III 90Z / 70Z 2-PLY DICKIES STYLE MID-WEIGHT INDURA ULTRA SOFT FR WELDING & ELECTRICAL RATED JACKET ZIPPER CLOSURE

ANSI STYLE CLASS III 90Z / 70Z 2-PLY DICKIES STYLE MID-WEIGHT INDURA ULTRA SOFT FR WELDING & ELECTRICAL RATED JACKET; ASTM F1506 AND NFPA 70E; ORANGE; ZIPPER CLOSURE

SIZE	COST EA	SPTX PART #	SIZE	COST EA	SPTX PART #	SIZE	COST EA	SPTX PART #
S	\$ 174.24	BNSF9393705	2XL	\$ 177.87	BNSF9393709	LG TALL	\$ 177.87	BNSF9393714
M	\$ 174.24	BNSF9393706	3XL	\$ 181.50	BNSF9393710	XL TALL	\$ 177.87	BNSF9393715
L	\$ 174.24	BNSF9393707	4XL	\$ 185.13	BNSF9393711	2XL TALL	\$ 181.50	BNSF9393716
XL	\$ 174.24	BNSF9393708	5XL	\$ 188.76	BNSF9393712	3XL TALL	\$ 185.13	BNSF9393717
			6XL	\$ 192.29	BNSF9393713	4XL TALL	\$ 188.76	BNSF9393718
						5XL TALL	\$ 192.39	BNSF9393719
						6XL TALL	\$ 194.81	BNSF9393720



### CLASS III 110Z INDURA CANVAS OUTSIDE / 110Z INDURA ULTRA SOFT FLEECE COLD WEATHER FR WELDING & ELECTRICAL RATED JACKET SNAP CLOSURE

ANSI STYLE CLASS III 110Z INDURA CANVAS OUTSIDE / 110Z INDURA ULTRA SOFT FLEECE COLD WEATHER FR WELDING & ELECTRICAL RATED JACKET; ASTM F1506 AND NFPA 70E; ORANGE; ZIPPER CLOSURE

SIZE	COST EA	SPTX PART #	SIZE	COST EA	SPTX PART #	SIZE	COST EA	SPTX PART #
S	\$ 192.50	BNSF9543705	2XL	\$ 203.50	BNSF9543709	LG TALL	\$ 203.50	BNSF9543714
M	\$ 192.50	BNSF9543706	3XL	\$ 209.00	BNSF9543710	XL TALL	\$ 203.50	BNSF9543715
L	\$ 192.50	BNSF9543707	4XL	\$ 214.50	BNSF9543711	2XL TALL	\$ 209.00	BNSF9543716
XL	\$ 192.50	BNSF9543708	5XL	\$ 220.00	BNSF9543712	3XL TALL	\$ 214.50	BNSF9543717
			6XL	\$ 225.50	BNSF9543713	4XL TALL	\$ 220.00	BNSF9543718
						5XL TALL	\$ 225.50	BNSF9543719
						6XL TALL	\$ 231.00	BNSF9543720



### CLASS III 110Z INDURA CANVAS OUTSIDE / 70Z INDURA ULTRA SOFT LINED COLD WEATHER FR WELDING & ELECTRICAL RATED JACKET WITH HOOD ZIPPER CLOSURE

ANSI STYLE CLASS III 110Z INDURA CANVAS OUTSIDE / 70Z INDURA ULTRA SOFT LINED COLD WEATHER FR WELDING & ELECTRICAL RATED JACKET WITH HOOD; ASTM F1506 AND NFPA 70E; ORANGE; ZIPPER CLOSURE

SIZE	COST EA	SPTX PART #	SIZE	COST EA	SPTX PART #	SIZE	COST EA	SPTX PART #
S	\$ 211.75	BNSF9583705	2XL	\$ 223.85	BNSF9583709	LG TALL	\$ 223.85	BNSF9583714
M	\$ 211.75	BNSF9583706	3XL	\$ 229.90	BNSF9583710	XL TALL	\$ 223.85	BNSF9583715
L	\$ 211.75	BNSF9583707	4XL	\$ 235.95	BNSF9583711	2XL TALL	\$ 229.90	BNSF9583716
XL	\$ 211.75	BNSF9583708	5XL	\$ 242.00	BNSF9583712	3XL TALL	\$ 235.95	BNSF9583717
			6XL	\$ 248.05	BNSF9583713	4XL TALL	\$ 242.00	BNSF9583718
						5XL TALL	\$ 248.05	BNSF9583719
						6XL TALL	\$ 254.10	BNSF9583720







## // COVERALLS & BIBS



### CLASS III 6OZ FEATHER WEIGHT FR WELDING & ELECTRICAL RATED COVERALLS SNAP CLOSURE - ADJUSTABLE LENGTH

ANSI STYLE CLASS III 6OZ FEATHER WEIGHT FR WELDING & ELECTRICAL RATED COVERALLS; ASTM F1506 AND NFPA 70E; ORANGE; SNAP CLOSURE; ADJUSTABLE LENGTH

SIZE	COST EA	SPTX PART #	SIZE	COST EA	SPTX PART #
S	\$ 165.00	BNSF8763705	2XL	\$ 173.00	BNSF8763709
M	\$ 165.00	BNSF8763706	3XL	\$ 177.00	BNSF8763710
L	\$ 165.00	BNSF8763707	4XL	\$ 181.00	BNSF8763711
XL	\$ 165.00	BNSF8763708	5XL	\$ 187.00	BNSF8763712
			6XL	\$ 193.00	BNSF8763713



### CLASS III 7OZ LIGHT WEIGHT INDURA ULTRA SOFT FR WELDING & ELECTRICAL RATED COVERALLS SNAP CLOSURE - ADJUSTABLE LENGTH

ANSI STYLE CLASS III 7OZ LIGHT WEIGHT INDURA ULTRA SOFT FR WELDING & ELECTRICAL RATED COVERALLS; ASTM F1506 AND NFPA 70E; ORANGE; SNAP CLOSURE; ADJUSTABLE LENGTH

SIZE	COST EA	SPTX PART #	SIZE	COST EA	SPTX PART #
S	\$ 175.00	BNSF8703705	2XL	\$ 183.00	BNSF8703709
M	\$ 175.00	BNSF8703706	3XL	\$ 187.00	BNSF8703710
L	\$ 175.00	BNSF8703707	4XL	\$ 191.00	BNSF8703711
XL	\$ 175.00	BNSF8703708	5XL	\$ 197.00	BNSF8703712
			6XL	\$ 203.00	BNSF8703713



### CLASS III 9OZ MID-WEIGHT INDURA ULTRA SOFT FR WELDING & ELECTRICAL RATED COVERALLS SNAP CLOSURE - ADJUSTABLE LENGTH

ANSI STYLE CLASS III 9OZ MID-WEIGHT INDURA ULTRA SOFT FR WELDING & ELECTRICAL RATED COVERALLS; ASTM F1506 AND NFPA 70E; ORANGE; SNAP CLOSURE; ADJUSTABLE LENGTH

SIZE	COST EA	SPTX PART #	SIZE	COST EA	SPTX PART #
S	\$ 185.00	BNSF8993705	2XL	\$ 193.00	BNSF8993709
M	\$ 185.00	BNSF8993706	3XL	\$ 197.00	BNSF8993710
L	\$ 185.00	BNSF8993707	4XL	\$ 201.00	BNSF8993711
XL	\$ 185.00	BNSF8993708	5XL	\$ 207.00	BNSF8993712
			6XL	\$ 213.00	BNSF8993713



### 7OZ LIGHT WEIGHT INDURA ULTRA SOFT FR HOTWORKS BIBS SNAP CLOSURES - ADJUSTABLE LENGTH

ANSI STYLE 7OZ LIGHT WEIGHT INDURA ULTRA SOFT FR HOTWORKS BIBS; ASTM F1506 AND NFPA 70E; ORANGE; SNAP CLOSURES; ADJUSTABLE LENGTH

SIZE	COST EA	SPTX PART #
S	\$ 180.00	BNSF8673705
M	\$ 180.00	BNSF8673706
L	\$ 180.00	BNSF8673707
XL	\$ 180.00	BNSF8673708
2XL	\$ 188.00	BNSF8673709
3XL	\$ 192.00	BNSF8673710
4XL	\$ 196.00	BNSF8673711
5XL	\$ 202.00	BNSF8673712
6XL	\$ 228.00	BNSF8673713



### 9OZ MID-WEIGHT INDURA ULTRA SOFT FR HOTWORKS BIBS SNAP CLOSURES - ADJUSTABLE LENGTH

ANSI STYLE 9OZ MID-WEIGHT INDURA ULTRA SOFT FR HOTWORKS BIBS; ASTM F1506 AND NFPA 70E; ORANGE; SNAP CLOSURES; ADJUSTABLE LENGTH

SIZE	COST EA	SPTX PART #
S	\$ 180.00	BNSF8693705
M	\$ 180.00	BNSF8693706
L	\$ 180.00	BNSF8693707
XL	\$ 180.00	BNSF8693708
2XL	\$ 188.00	BNSF8693709
3XL	\$ 192.00	BNSF8693710
4XL	\$ 196.00	BNSF8693711
5XL	\$ 202.00	BNSF8693712
6XL	\$ 228.00	BNSF8693713

# FLAME RESISTANT

# FLAME RESISTANT

## // RAIN GEAR



### CLASS III ELECTRICAL RATED RAIN SUIT – JACKET & BIBS SET

ANSI CLASS III ELECTRICAL RATED RAIN SUIT; JACKETS & BIBS; ORANGE; INHERENTLY RATED FIRE RESISTANT; MEETS ASTM F1891 FOR THERMAL ARC PERFORMANCE

SIZE	COST EA	SPTX PART #	SIZE	COST EA	SPTX PART #
S	\$ 258.50	BNSF8003705	2XL	\$ 264.00	BNSF8003709
M	\$ 258.50	BNSF8003706	3XL	\$ 269.50	BNSF8003710
L	\$ 258.50	BNSF8003707	4XL	\$ 275.00	BNSF8003711
XL	\$ 258.50	BNSF8003708	5XL	\$ 280.50	BNSF8003712
			6XL	\$ 286.00	BNSF8003713



### CLASS III ELECTRICAL RATED RAIN SUIT – JACKET & PANTS SET

ANSI CLASS III ELECTRICAL RATED RAIN SUIT; JACKETS & PANTS; ORANGE; INHERENTLY RATED FIRE RESISTANT; MEETS ASTM F1891 FOR THERMAL ARC PERFORMANCE

SIZE	COST EA	SPTX PART #	SIZE	COST EA	SPTX PART #
S	\$ 270.60	BNSF8053705	2XL	\$ 276.10	BNSF8053709
M	\$ 270.60	BNSF8053706	3XL	\$ 281.60	BNSF8053710
L	\$ 270.60	BNSF8053707	4XL	\$ 287.10	BNSF8053711
XL	\$ 270.60	BNSF8053708	5XL	\$ 292.60	BNSF8053712
			6XL	\$ 298.10	BNSF8053713



### CLASS III ELECTRICAL RATED RAIN JACKET - SEPARATES

ANSI CLASS III ELECTRICAL RATED RAIN JACKET; ORANGE; INHERENTLY RATED FIRE RESISTANT; MEETS ASTM F1891 FOR THERMAL ARC PERFORMANCE

SIZE	COST EA	SPTX PART #	SIZE	COST EA	SPTX PART #
S	\$ 155.10	BNSF8103705	2XL	\$ 158.40	BNSF8103709
M	\$ 155.10	BNSF8103706	3XL	\$ 161.70	BNSF8103710
L	\$ 155.10	BNSF8103707	4XL	\$ 165.00	BNSF8103711
XL	\$ 155.10	BNSF8103708	5XL	\$ 168.30	BNSF8103712
			6XL	\$ 171.60	BNSF8103713



### CLASS E ELECTRICAL RATED RAIN BIBS - SEPARATES

ANSI CLASS E ELECTRICAL RATED RAIN BIBS; ORANGE; INHERENTLY RATED FIRE RESISTANT; MEETS ASTM F1891 FOR THERMAL ARC PERFORMANCE

SIZE	COST EA	SPTX PART #
S	\$ 103.40	BNSF8303705
M	\$ 103.40	BNSF8303706
L	\$ 103.40	BNSF8303707
XL	\$ 103.40	BNSF8303708
2XL	\$ 105.60	BNSF8303709
3XL	\$ 107.80	BNSF8303710
4XL	\$ 110.00	BNSF8303711
5XL	\$ 112.20	BNSF8303712
6XL	\$ 114.40	BNSF8303713



### CLASS E ELECTRICAL RATED RAIN PANTS - SEPARATES

ANSI CLASS E ELECTRICAL RATED RAIN PANTS; ORANGE; INHERENTLY RATED FIRE RESISTANT; MEETS ASTM F1891 FOR THERMAL ARC PERFORMANCE

SIZE	COST EA	SPTX PART #
S	\$ 115.50	BNSF8353705
M	\$ 115.50	BNSF8353706
L	\$ 115.50	BNSF8353707
XL	\$ 115.50	BNSF8353708
2XL	\$ 117.70	BNSF8353709
3XL	\$ 119.90	BNSF8353710
4XL	\$ 122.10	BNSF8353711
5XL	\$ 124.30	BNSF8353712
6XL	\$ 126.50	BNSF8353713





## // HEADWEAR



**CLASS E FR 6.5OZ LIGHT WEIGHT RIB KNIT BEANIE WITH 3M SCOTCHLITE RETROREFLECTIVE STRETCHABLE TAPING**  
ANSI STYLE CLASS E FR 6.5OZ KNIT BEANIE WITH 3M SCOTCHLITE RETROREFLECTIVE STRETCHABLE TAPING; ORANGE

SIZE	COST EA	SPTX PART #
S/M	\$ 31.90	BNSFR2703705/M
L/XL	\$ 31.90	BNSFR2703707/XL
2XL /3X	\$ 31.90	BNSFR270-37-2X/3X



**CLASS E FR 10OZ HEAVY WEIGHT RIB KNIT BEANIE WITH 3M SCOTCHLITE RETROREFLECTIVE STRETCHABLE TAPING**  
ANSI STYLE CLASS E FR 10OZ KNIT BEANIE WITH 3M SCOTCHLITE RETROREFLECTIVE STRETCHABLE TAPING; ORANGE

SIZE	COST EA	SPTX PART #
S/M	\$ 31.90	BNSFR2103705/M
L/XL	\$ 31.90	BNSFR2103707/XL
2XL /3X	\$ 31.90	BNSFR210-37-2X/3X



**FR 2-IN-1 LIGHT WEIGHT BEANIE WITH EAR MUFFS AND FR 6.5 OZ RIB KNIT FACE SHIELD**  
ANSI STYLE FR 2 IN 1 BEANIE WITH EAR MUFFS AND FR RIB KNIT 6.5 OZ FACE SHIELD; ORANGE

SIZE	COST EA	SPTX PART #
S/M	\$ 35.50	BNSFR26037S/M
L/XL	\$ 35.50	BNSFR26037L/XL
2XL/3XL	\$ 35.50	BNSFR260-37-2X/3X



**FR 2-IN-1 HEAVY WEIGHT BEANIE WITH EAR MUFFS AND FR 10 OZ RIB KNIT FACE SHIELD**  
ANSI STYLE FR 2 IN 1 BEANIE WITH EAR MUFFS AND FR RIB KNIT 10 OZ FACE SHIELD; ORANGE

SIZE	COST EA	SPTX PART #
S/M	\$ 35.50	BNSFR22037S/M
L/XL	\$ 35.50	BNSFR22037L/XL
2XL/3XL	\$ 35.50	BNSFR220-37-2X/3X



**FR 6.5OZ LIGHT WEIGHT RIB KNIT SINGLE PLY BALACLAVA**  
ANSI STYLE FR 6.5OZ LIGHT WEIGHT RIB KNIT; SINGLE PLY BALACLAVA; ORANGE

SIZE	COST EA	SPTX PART #
S/M	\$ 26.00	BNSFR23037S/M
L/XL	\$ 26.00	BNSFR23037L/XL
2XL /3X	\$ 26.00	BNSFR230-37-2X/3X



**FR 10 OZ HEAVY WEIGHT RIB KNIT SINGLE PLY BALACLAVA**  
ANSI STYLE FR 10 OZ HEAVY WEIGHT RIB KNIT; SINGLE PLY BALACLAVA; ORANGE

SIZE	COST EA	SPTX PART #
S/M	\$ 39.95	BNSFR25037S/M
L/XL	\$ 39.95	BNSFR25037L/XL
2XL /3X	\$ 39.95	BNSFR250-37-2X/3X

## // ACCESSORIES



**9OZ MID-WEIGHT INDURA ULTRA SOFT FR WELDING APRON**  
9OZ MID-WEIGHT INDURA ULTRA SOFT FR WELDING APRON; ASTM F1506 AND NFPA 70E; ORANGE

SIZE	COST EA	SPTX PART #
REGULAR	\$ 50.82	BNSF933-37-R
SHORT	\$ 45.98	BNSF9333705
TALL	\$ 55.66	BNSF933-37-T





U.S.A. MADE



Flame Resistant Fabrics



Flame Resistant Fabrics



# CONTACT US:

SPORTEX SAFETY

EMAIL: [LarryDeutsch@SportexApparel.com](mailto:LarryDeutsch@SportexApparel.com)

WEBSITE: [www.BNSFhivisWorkwear.com](http://www.BNSFhivisWorkwear.com)

PHONE: 1.800.486.8677

QR CODE//SNAP-IT!



**SPORTEX**  
SAFETY